


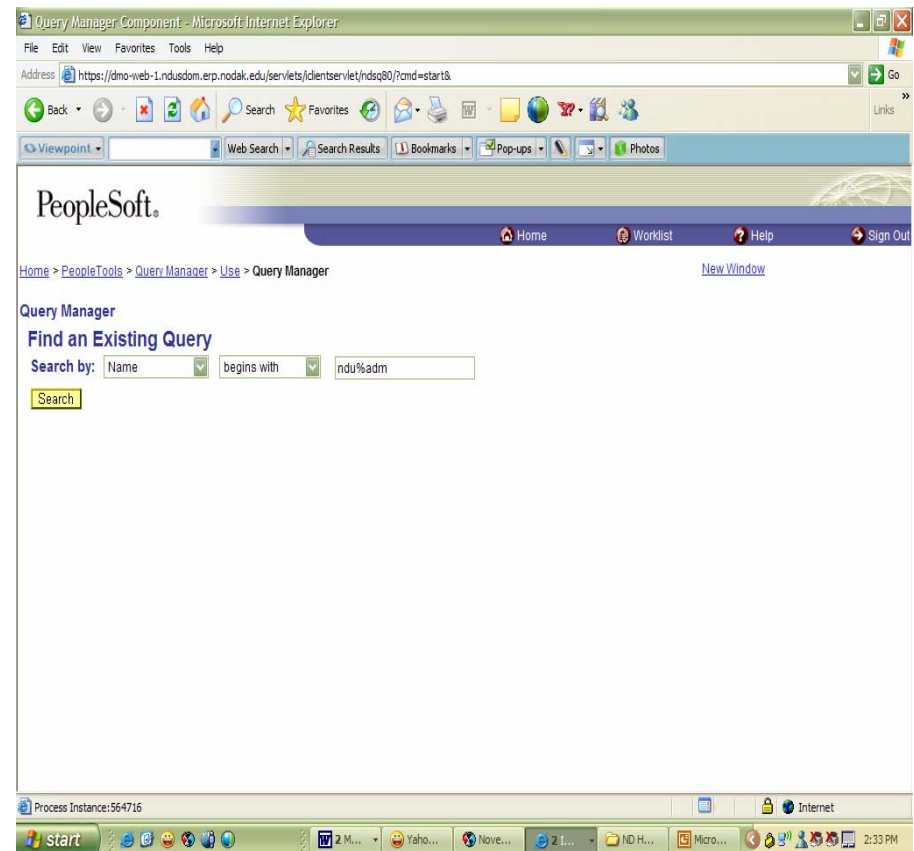
Recruitment and Admission Queries

Review of Existing
Queries and How Do
We Request New
Ones?



How Do I Find Queries?

- Navigation:
Home > PeopleTools >
Query
Manager > Use > Query
Manager
- Enter NDU%adm
(%=wildcard)



What Role (s) Do I Need?

- NDU Query Manager Run Only
- NDUS Process Monitor
- NDUS Report Manager

- Rec/Adm queries often require access to rec/app centers in order to get results.

How Do I Request a New Query

- <http://www.und.edu/dept/cndtrain/StuAdmin/Forms/studforms.htm>
- This link will provide you with the form to complete and the instructions on how to complete it.

What Happens After I Submit It?

- There is a process that occurs. See the flowcharts for detailed information.
- [DRFlowChart.doc](#)
- [DRMigrationflowChart.doc](#)

What Do We Have Right Now?

- Query Name Trish.doc

Group Sharing-Query Use

- How do you use some of the developed queries?
- Share what works well.
- Make suggestions for new query development.