

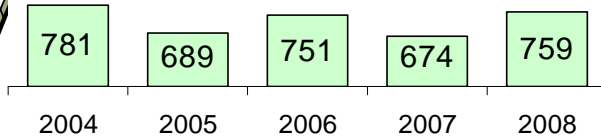
# University of North Dakota

## Student Profile of New Transfers for Fall 2008

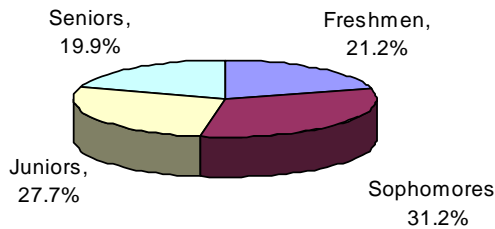
Enrollment	Men	Women	Total	M (%)	W (%)
Part-Time	159	72	231	68.8%	31.2%
Full-Time	298	230	528	56.4%	43.6%
<b>Total</b>	<b>457</b>	<b>302</b>	<b>759</b>	<b>60.2%</b>	<b>39.8%</b>



Five-Year Fall Enrollment



Classification	Men	Women	Total	Percent
Freshmen	122	39	161	21.2%
Sophomores	129	108	237	31.2%
Juniors	125	85	210	27.7%
Seniors	81	70	151	19.9%
<b>Total</b>	<b>457</b>	<b>302</b>	<b>759</b>	<b>100.0%</b>



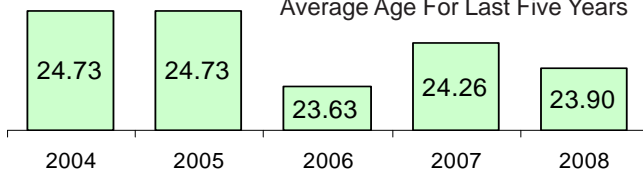
Total Student Credit Hours (SCH)			
Produced by New Transfers			
	Total	Percent	
Full-Time	7,658	85.6%	
Part-Time	1,287	14.4%	
<b>Total SCH</b>	<b>8,945</b>	<b>100.0%</b>	

Race/Ethnicity	Total	Percent
American Indian/Alaskan Native	43	5.7%
Black/Non-Hispanic American	17	2.2%
Asian or Pacific Islander American	10	1.3%
Hispanic American	13	1.7%
White/Non-Hispanic American	517	68.1%
Non-Resident Alien	114	15.0%
Not Reported	45	5.9%
<b>Total</b>	<b>759</b>	<b>100.0%</b>

Age	Total	Percent
Under 18	1	0.1%
18-19	126	16.6%
20-21	294	38.7%
22-24	143	18.8%
25-29	86	11.3%
30-34	39	5.1%
35-39	27	3.6%
40-49	30	4.0%
50 & over	11	1.4%
unknown	2	0.3%
<b>Total</b>	<b>759</b>	<b>100.0%</b>

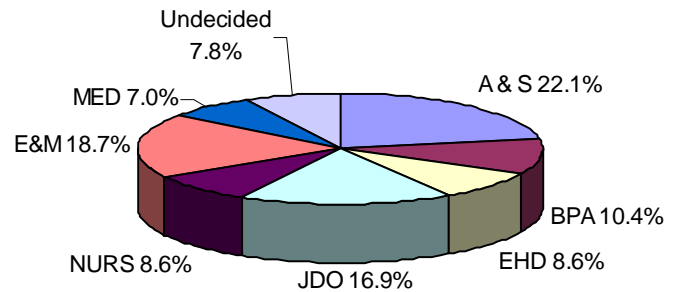
**Average Age 23.9**

Average Age For Last Five Years



Average Incoming GPA	3.00
Average # Credits Transferred into UND	58.46
Average # of credits enrolled in first semester	11.79

Enrollment by College	Total	Percent
Aerospace Sciences, JDO	128	16.9%
Arts & Sciences	168	22.1%
Business & Public Administration	79	10.4%
Education & Human Development	65	8.6%
Engineering & Mines	142	18.7%
Medicine & Health Sciences (UG)	53	7.0%
Nursing	65	8.6%
Undecided	59	7.8%
<b>Total</b>	<b>759</b>	<b>100.0%</b>



Highest Enrolled Program Areas	Total	Percent
Engineering	142	18.7%
Nurs / OT / PT / MedTc	137	18.1%
Aviation	126	16.6%
Business	69	9.1%
Undecided	53	7.0%
Education	38	5.0%
Biology	32	4.2%
Psychology	27	3.6%
Other	25	3.3%
P Admin / SWK	24	3.2%
History / Poli Sci / Soc / Soc Sci	24	3.2%
Criminal Justice Studies	19	2.5%
Geology / Chemistry	15	2.0%
CompInfoSci	8	1.1%
Journalism	8	1.1%
English / Comm	6	0.8%
Arts	6	0.8%
<b>Total</b>	<b>759</b>	<b>100.0%</b>

Residency*	Total	Percent
North Dakota (incl. Military)	250	32.9%
Minnesota	153	20.2%
Contiguous St/Prv	32	4.2%
WUE / WICHE	68	9.0%
Non-Resident	229	30.2%
MHEC States	27	3.6%
ND Grad / Alum Dep	0	0.0%
<b>Total</b>	<b>759</b>	<b>100.0%</b>

\* References "Residency Code" field on Student Data System

WUE / WICHE States: Alaska, Colorado, Hawaii, Idaho, New Mexico, Utah, Wyoming, Oregon, Nevada, Arizona, California, Washington

MHEC States: Kansas, Michigan, Missouri, Nebraska