

North Dakota Rural Life Poll
Farm Operators Survey, 1999

Curtis W. Stofferahn, Ph.D.

Principle Investigator

Visiting Professor, NDSU, Fall 1999

Associate Professor, UND

North Dakota Rural Life Poll

- First conducted in 1987 at UND. Also conducted in 1988, 1989, and 1993
- The poll was invited to relocate to NDSU in 1997
- Became a project of the Center for Rural Studies at NDSU in 1999
 - Inter-institutional & inter-disciplinary effort
 - Gown & country collaborative effort

Objectives of the Rural Life Poll

- To monitor the changing conditions in rural North Dakota
- To collect timely & relevant data on the conditions of rural North Dakota
- To disseminate the results to state & national policy makers as well as other interested groups, organizations & individuals

Supporters

- **Benefactors:** Catholic Family Services Rural Support Project
- **Sponsors:** ND Farmers Union Educational Foundation, Farm and Ranch Guide
- **Patron:** ND Department of Agriculture, Eastern ND Synod Evangelical Lutheran Church in America, ND Cooperative Extension Service
- **Contributors:** ND Mental Health Association, ND Association of Rural Electric Cooperatives, Putting the Pieces Together

Methodology

- ND Farm & Ranch Guide subscription list used as sampling frame
- Non-farmers and non-residents excluded
- 680 farmers & ranchers presently operating a farm or ranch interviewed by NDSU Center for Social Research in Sept., Oct.
- With a population of 30504 farms & ranches and a sample of 680, we can be 95% confident that the true values will not vary more than $\pm 3.7\%$ from survey values

Figure 1: Is there a farm crisis?

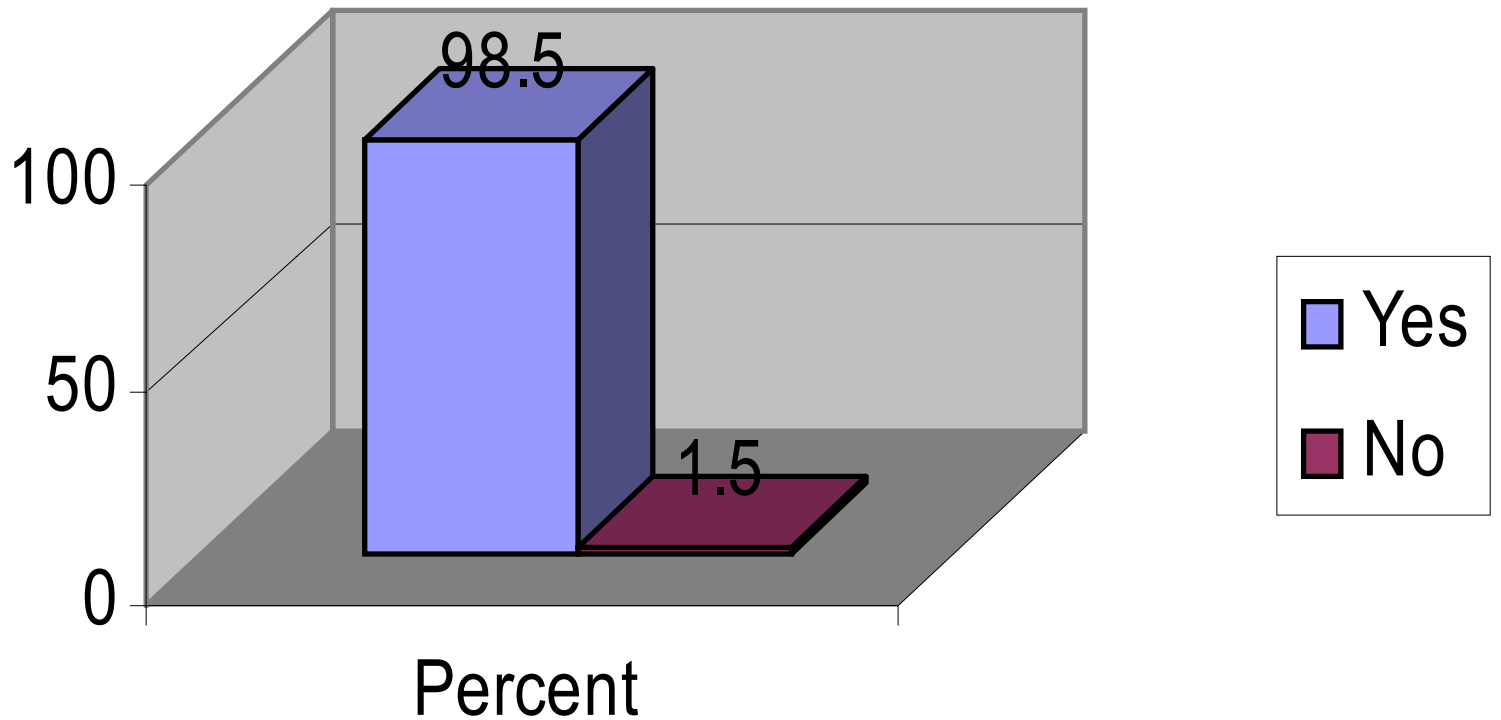


Figure 1b: Primary cause?

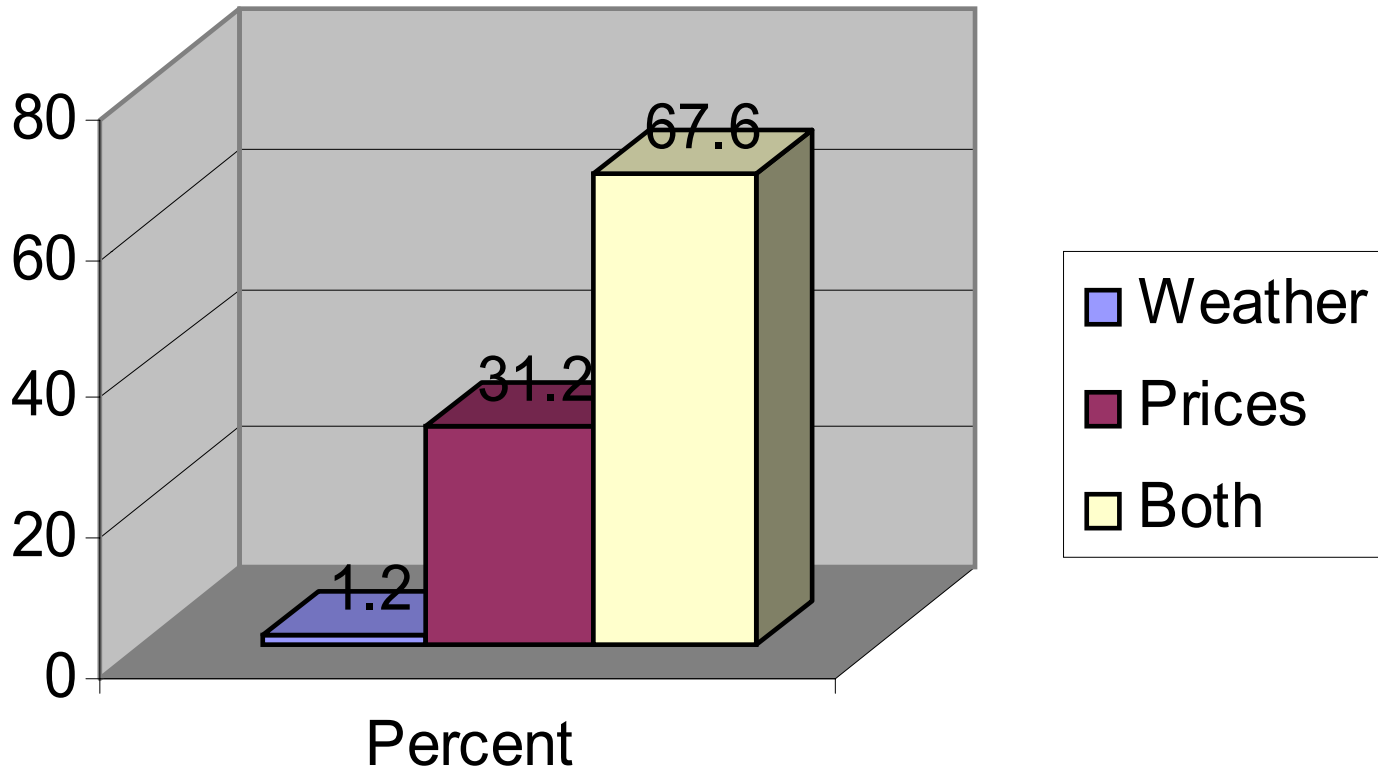


Figure 1c: Compared to 80's farm crisis is this one .. ?

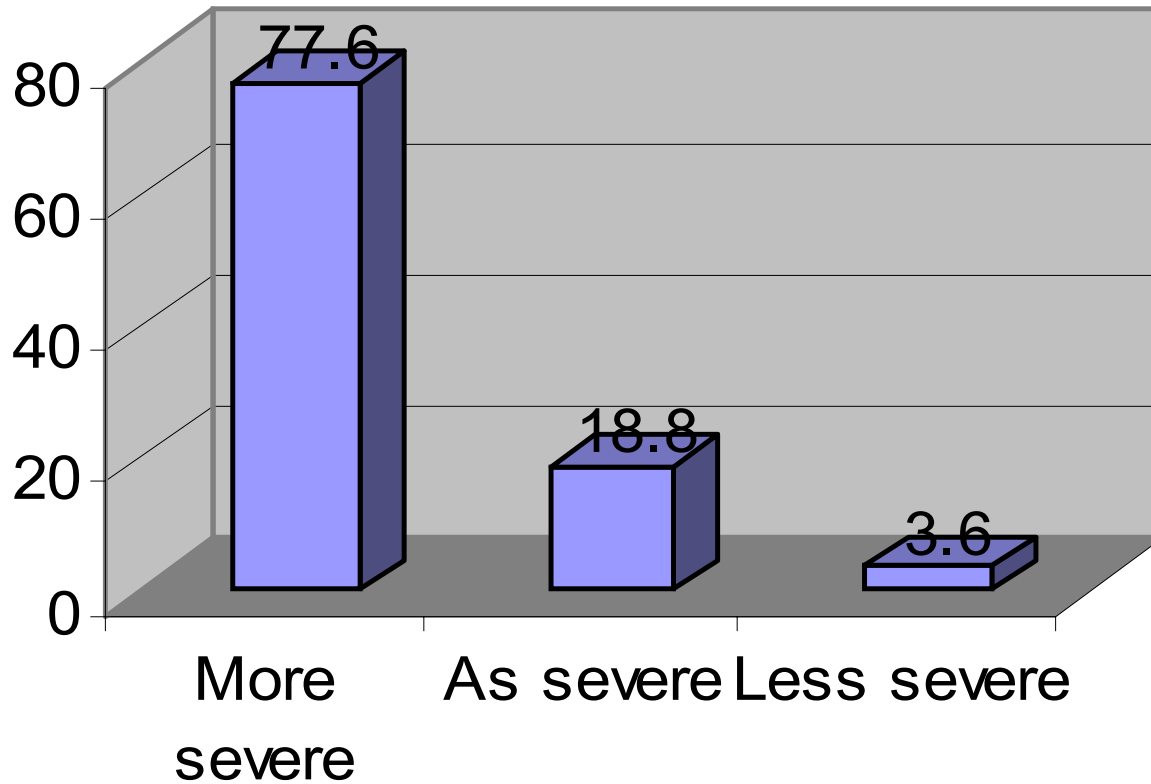


Figure 2a: Causes of farm crisis

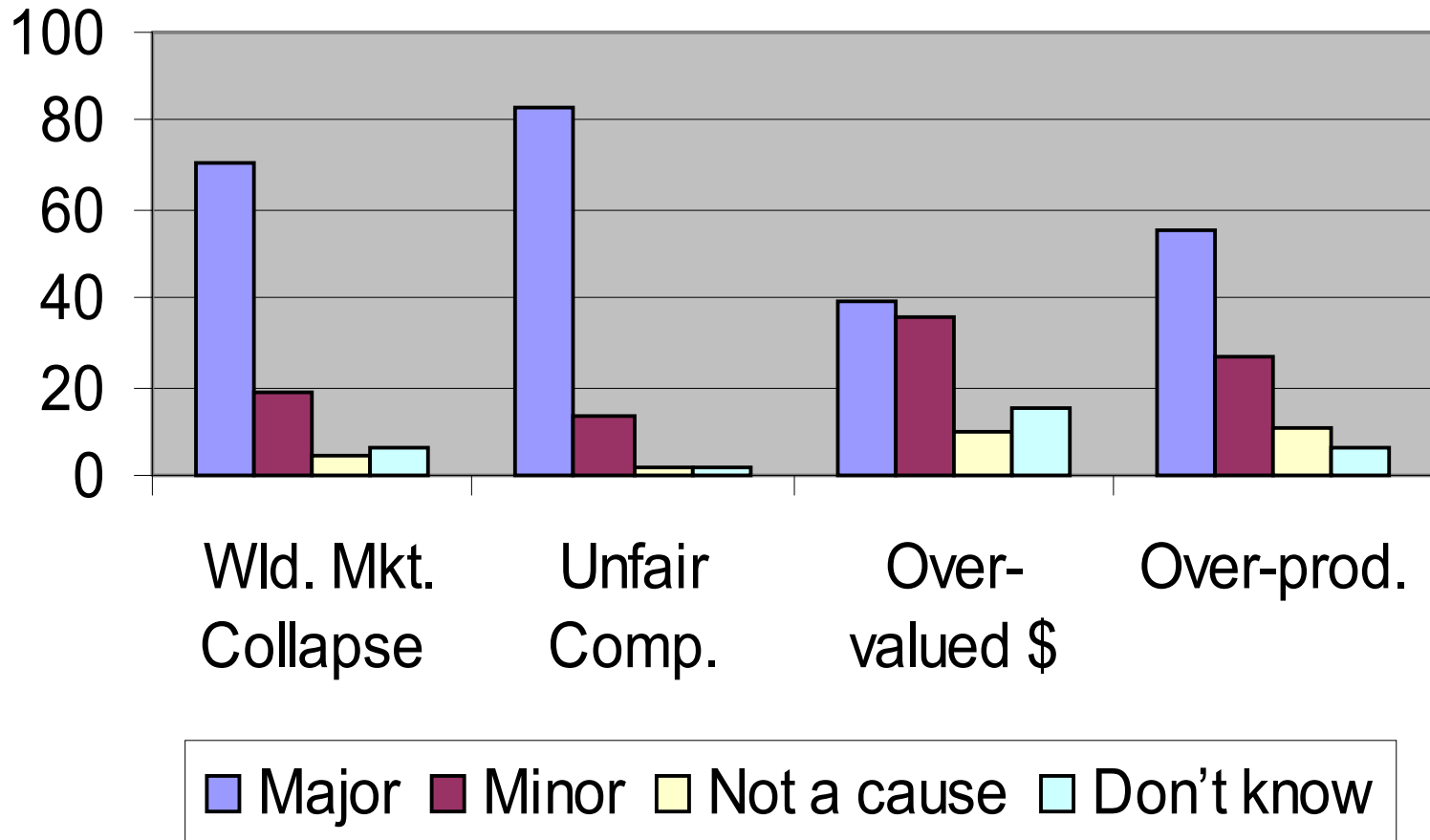


Figure 2b: Causes of farm crisis

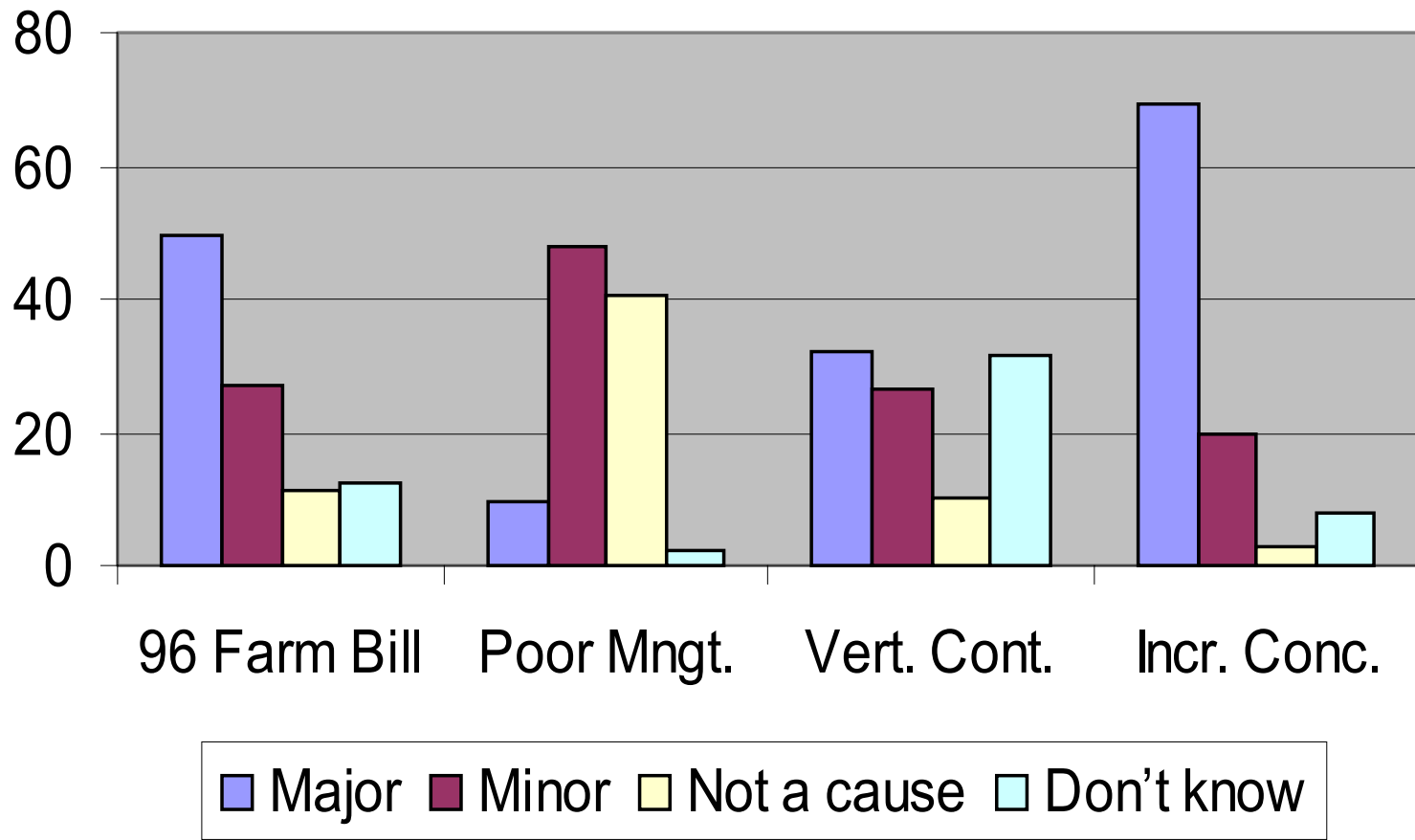
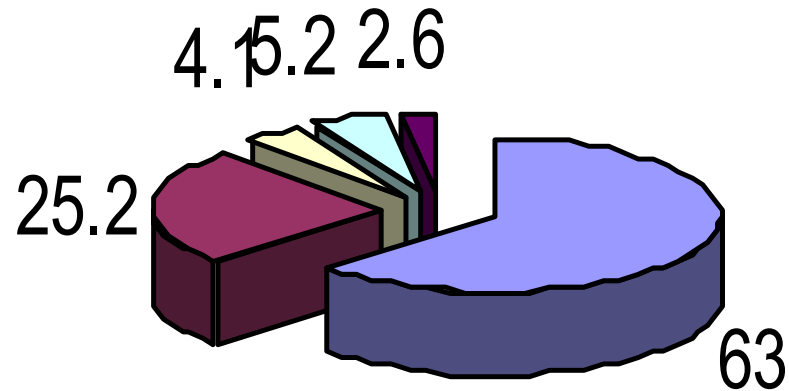


Figure 3a: Concern about farm financial situation



Very concerned

Moderately concerned

Unconcerned

Slightly concerned

Not concerned

Figure 3b: Extent of concern about effects of farm crisis

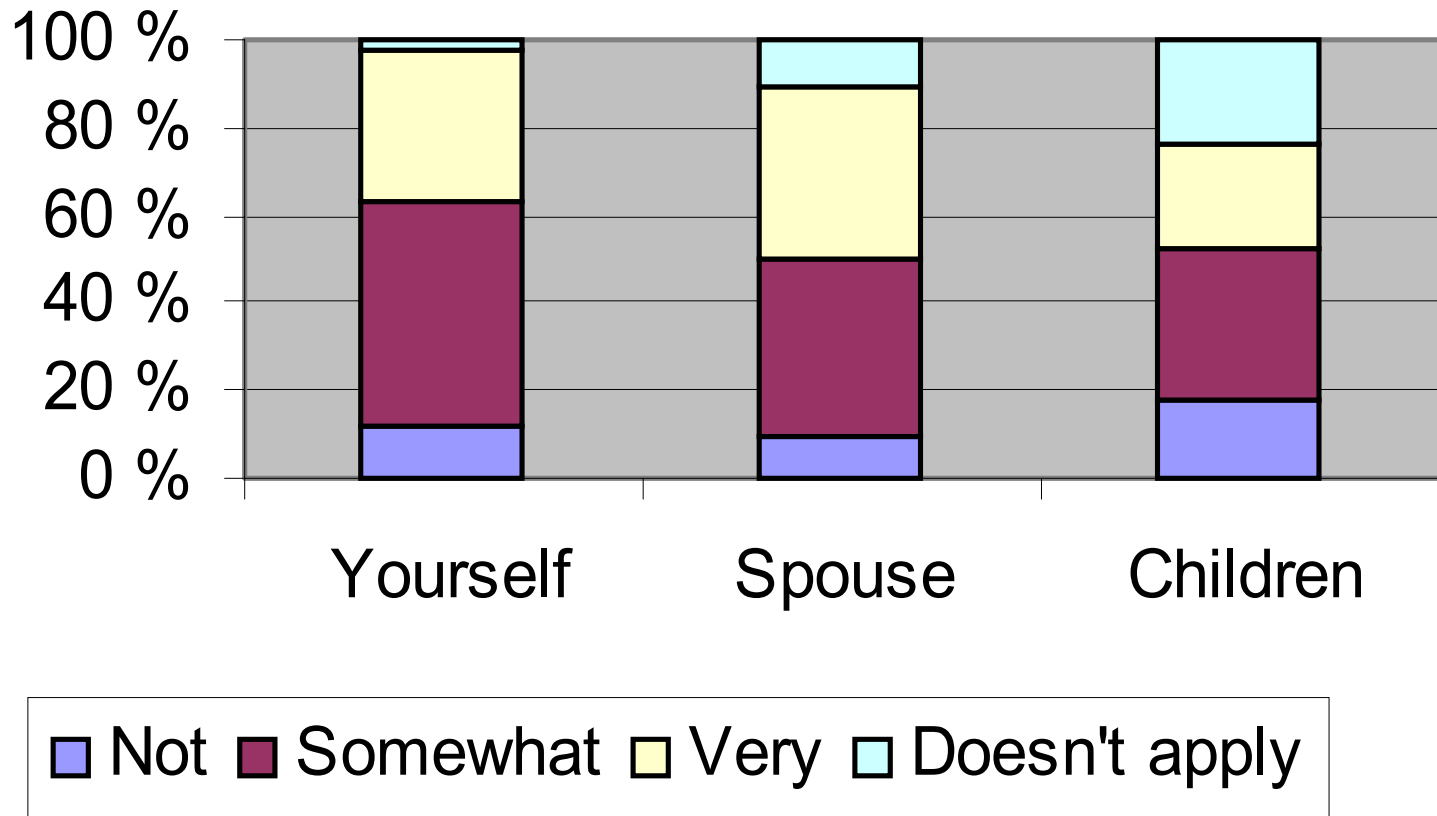
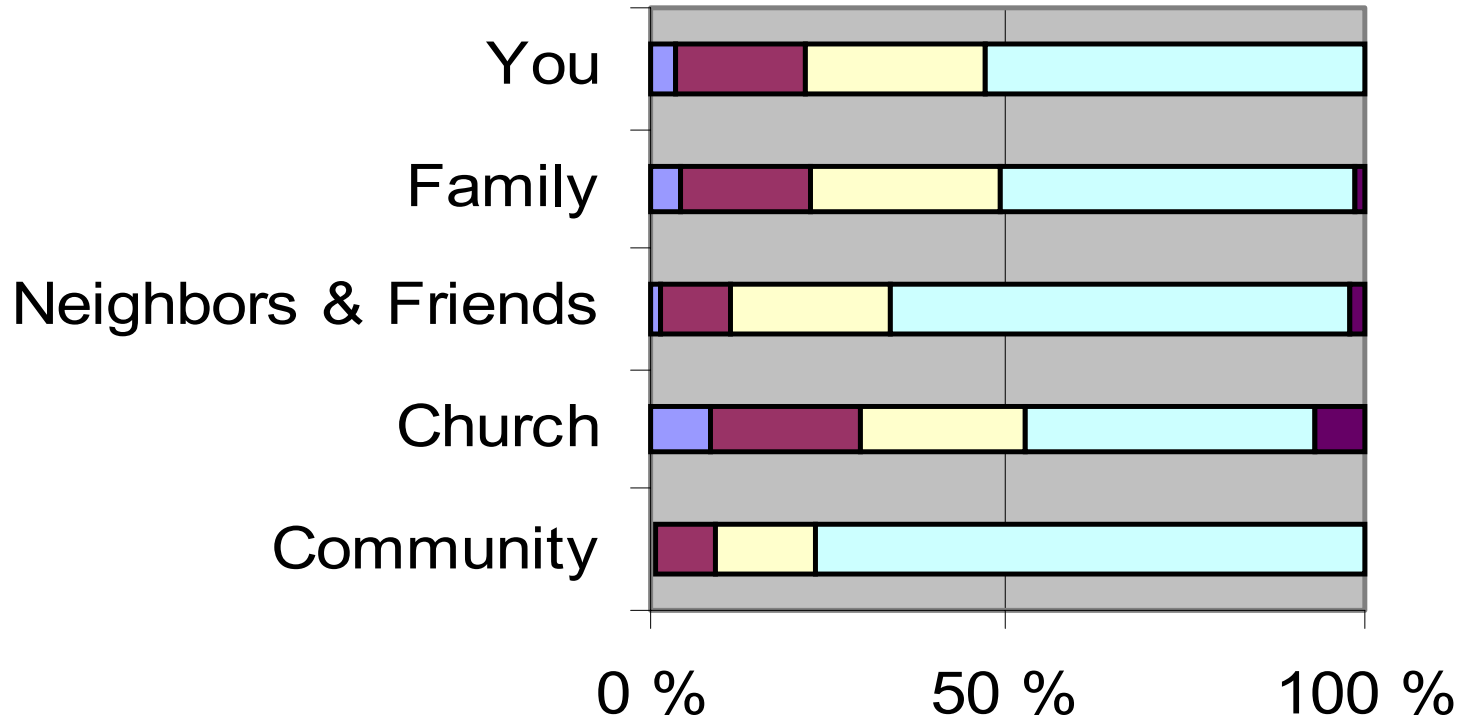


Figure 4: Extent of concern about effects of farm stress



None Some Moderate Large Don't know

Figure 5. Likelihood to seek help?

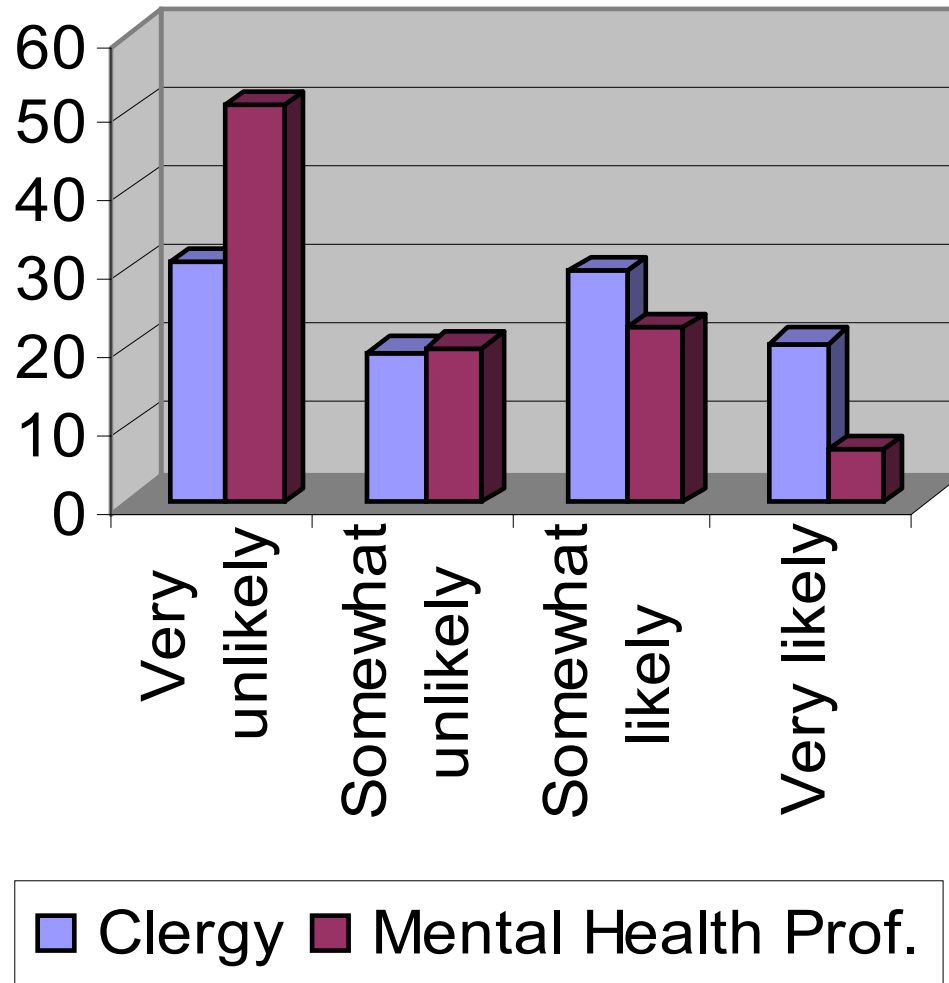


Figure 6a. Effects on family closeness?

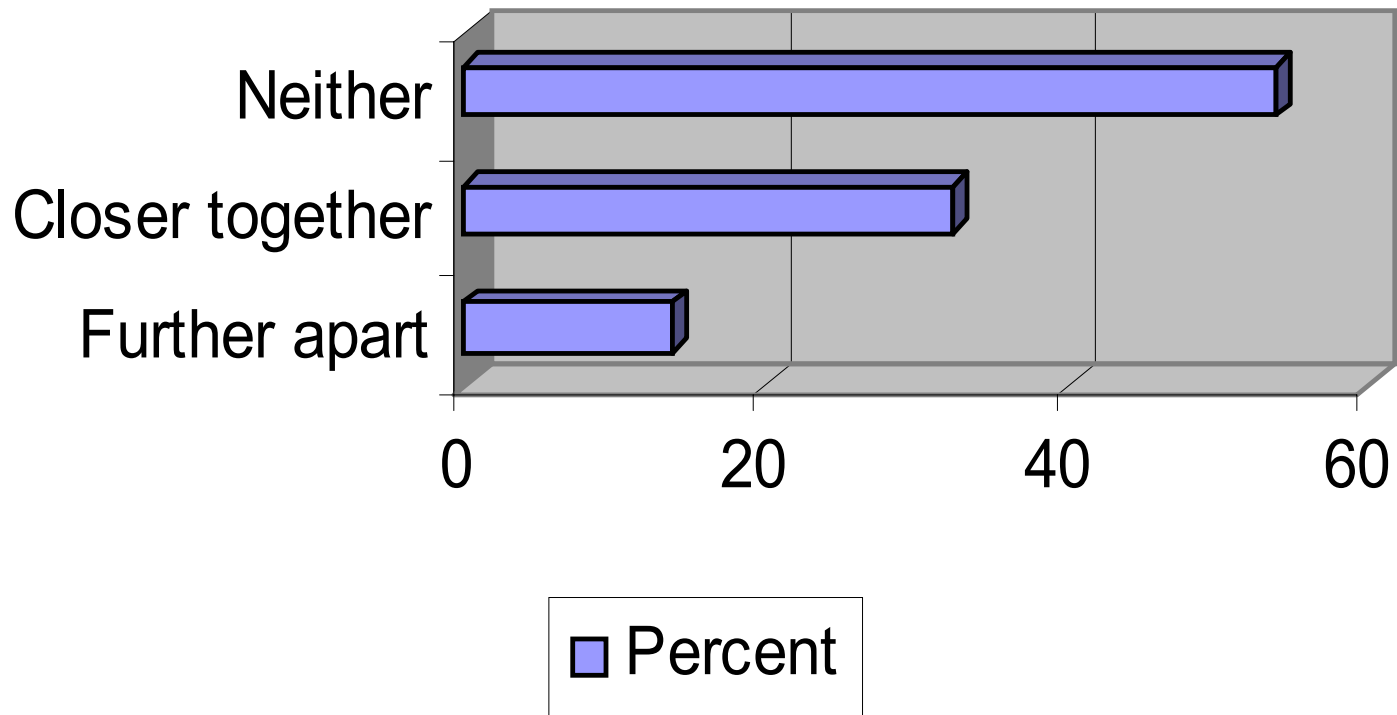


Figure 6b. If apart, how much?

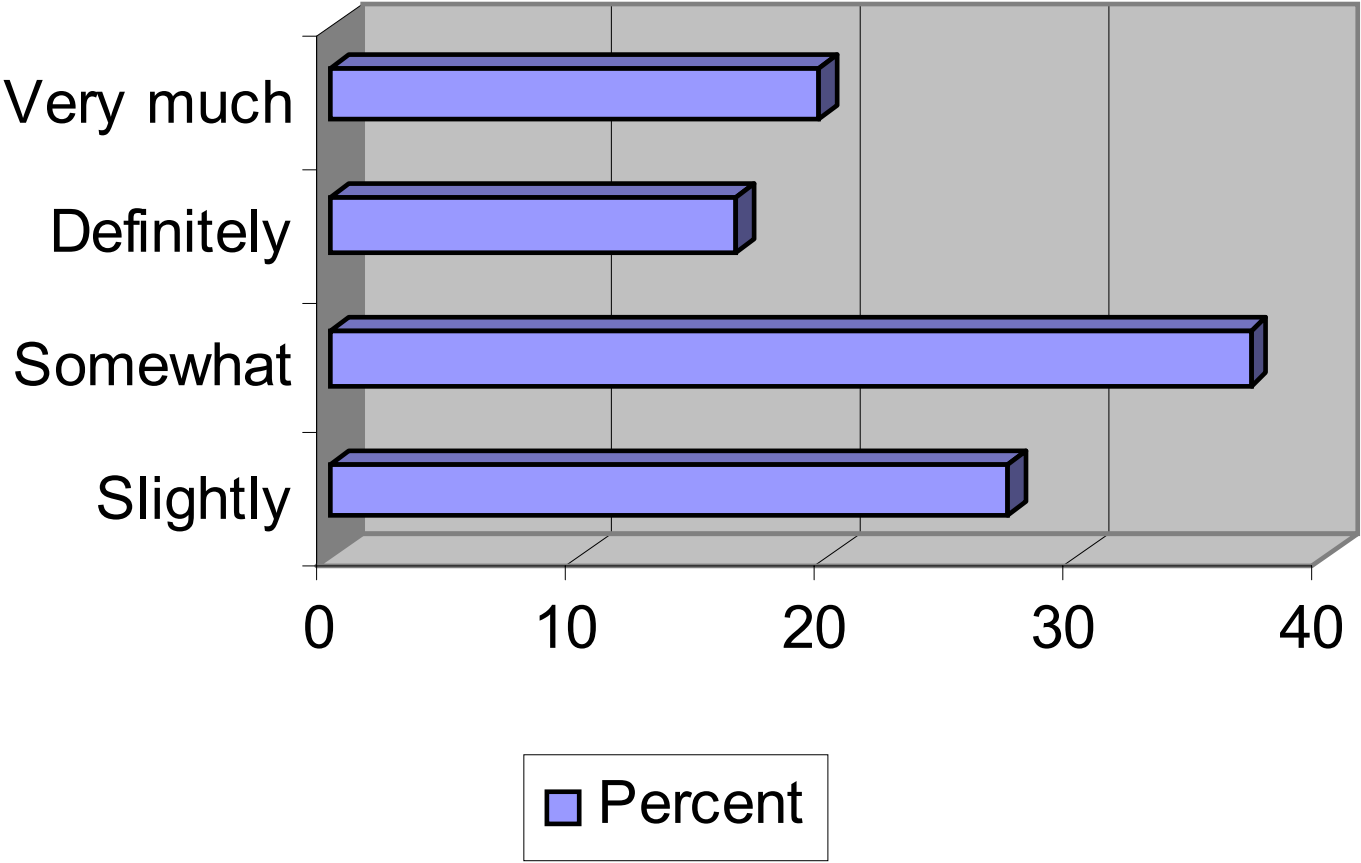


Figure 6c: If closer, how much?

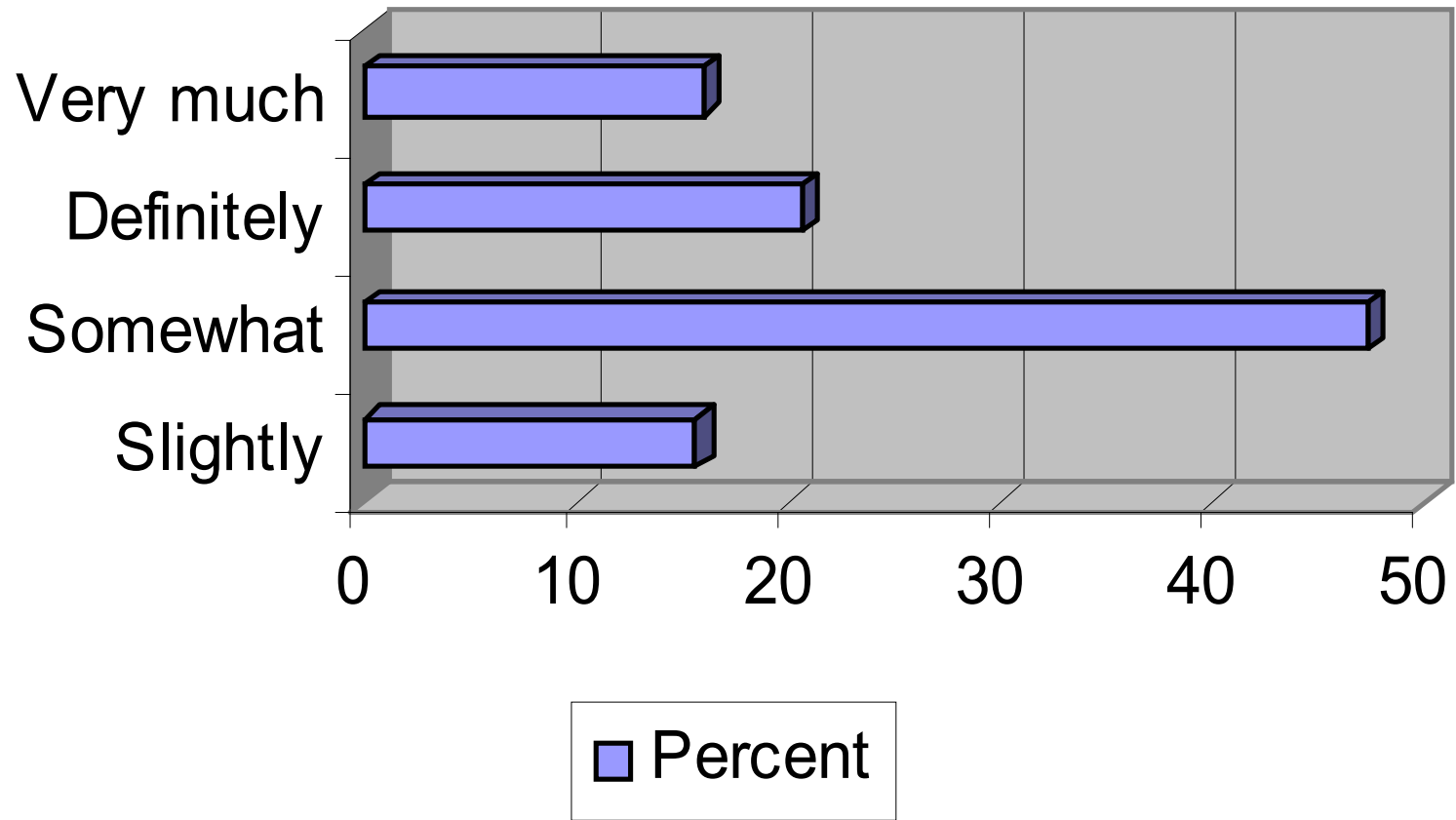
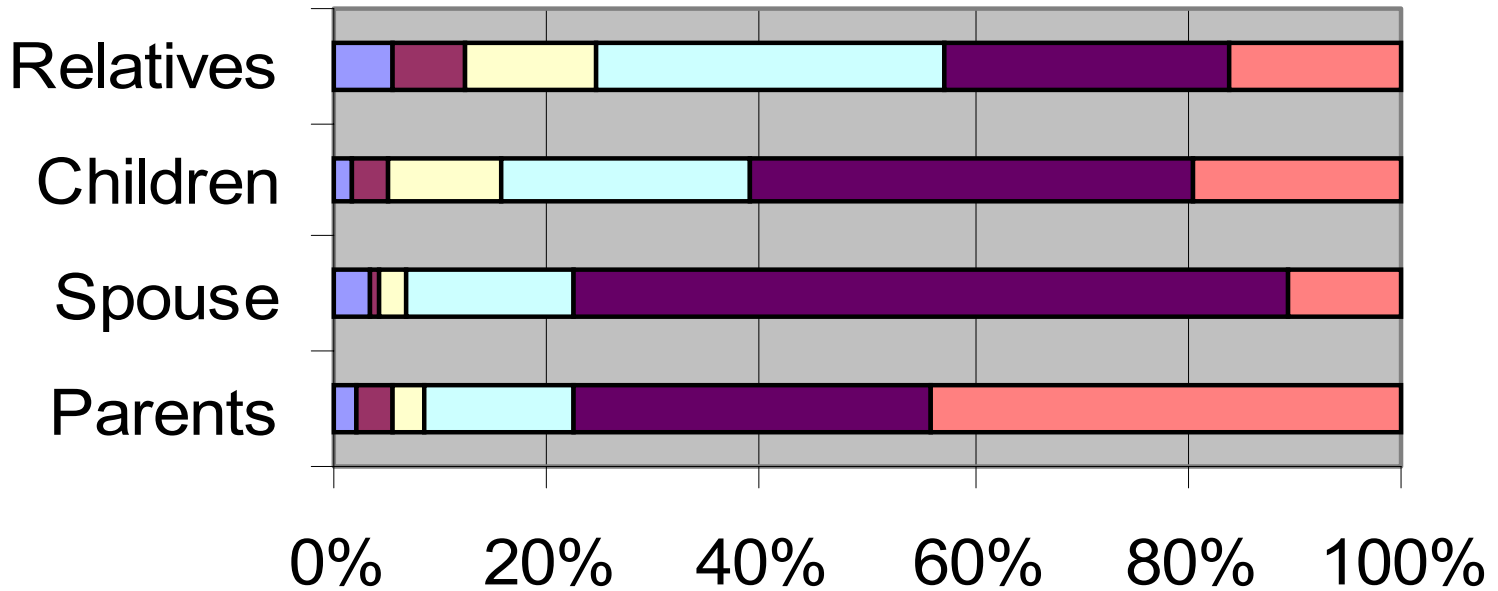


Figure 7a: Social support



Very unsupportive

Somewhat unsupportive

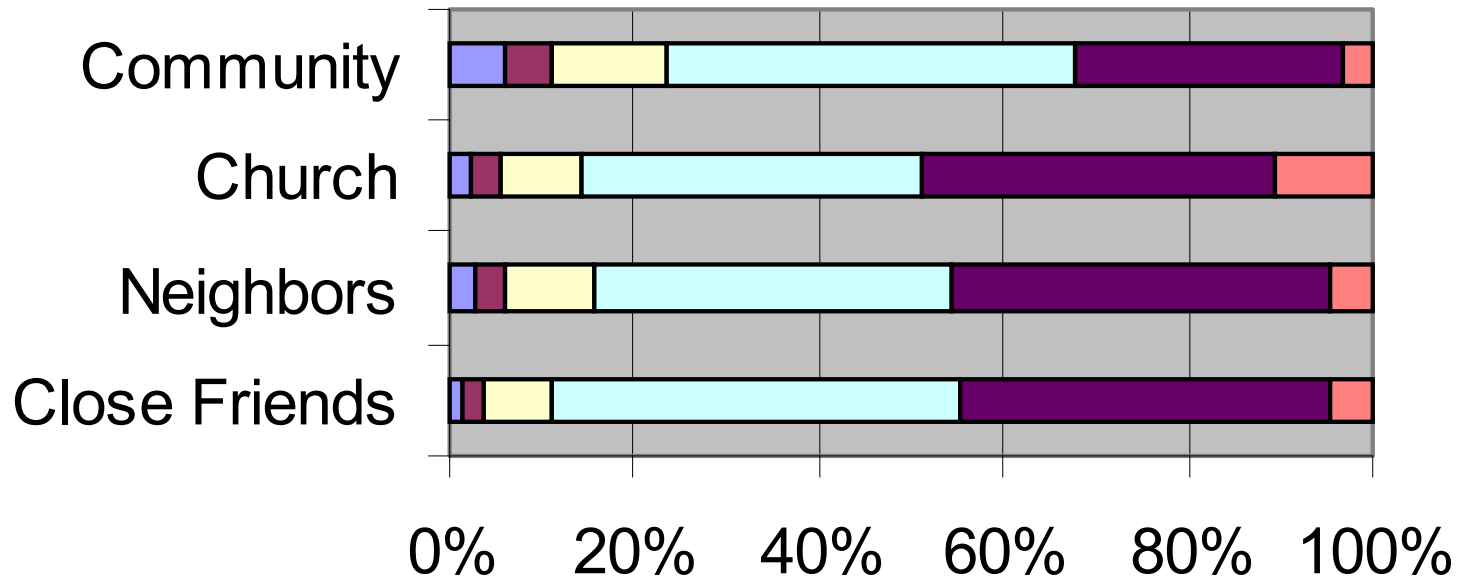
Neither

Somewhat supportive

Very supportive

Doesn't apply

Figure 7b: Social support



Very unsupportive

Somewhat unsupportive

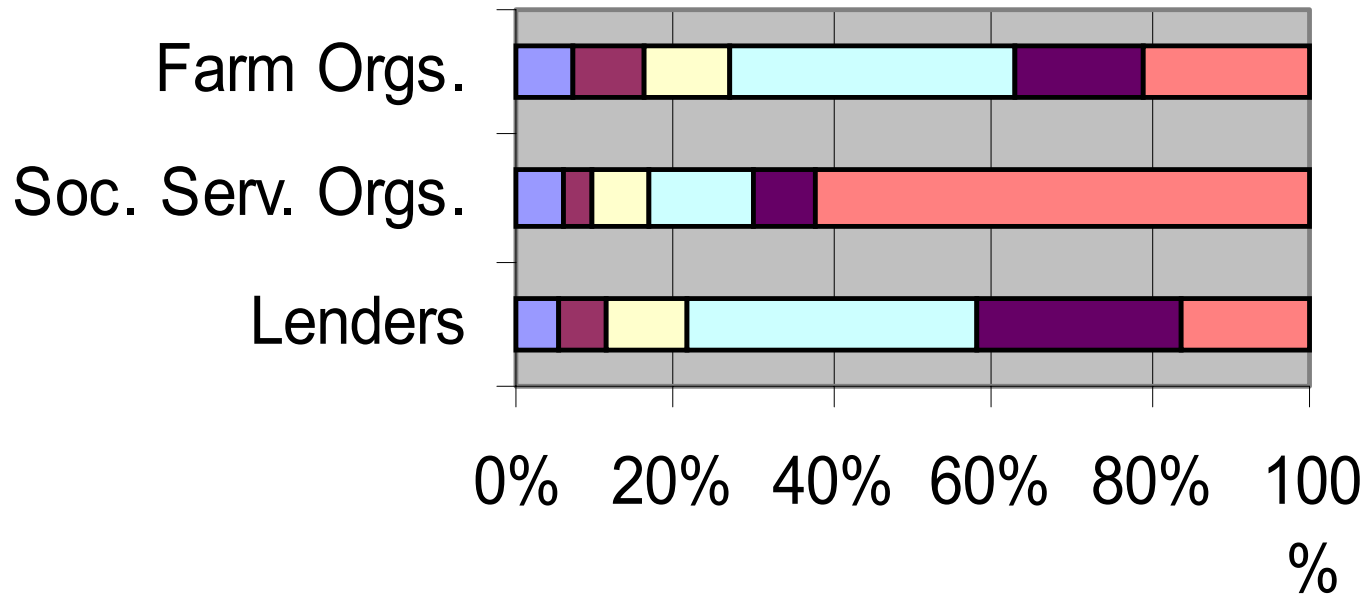
Neither

Somewhat supportive

Very supportive

Doesn't apply

Figure 7c: Social support



- Very unsupportive
- Somewhat unsupportive
- Neither
- Somewhat supportive
- Very supportive
- Doesn't apply

Figure 7d. Involvement

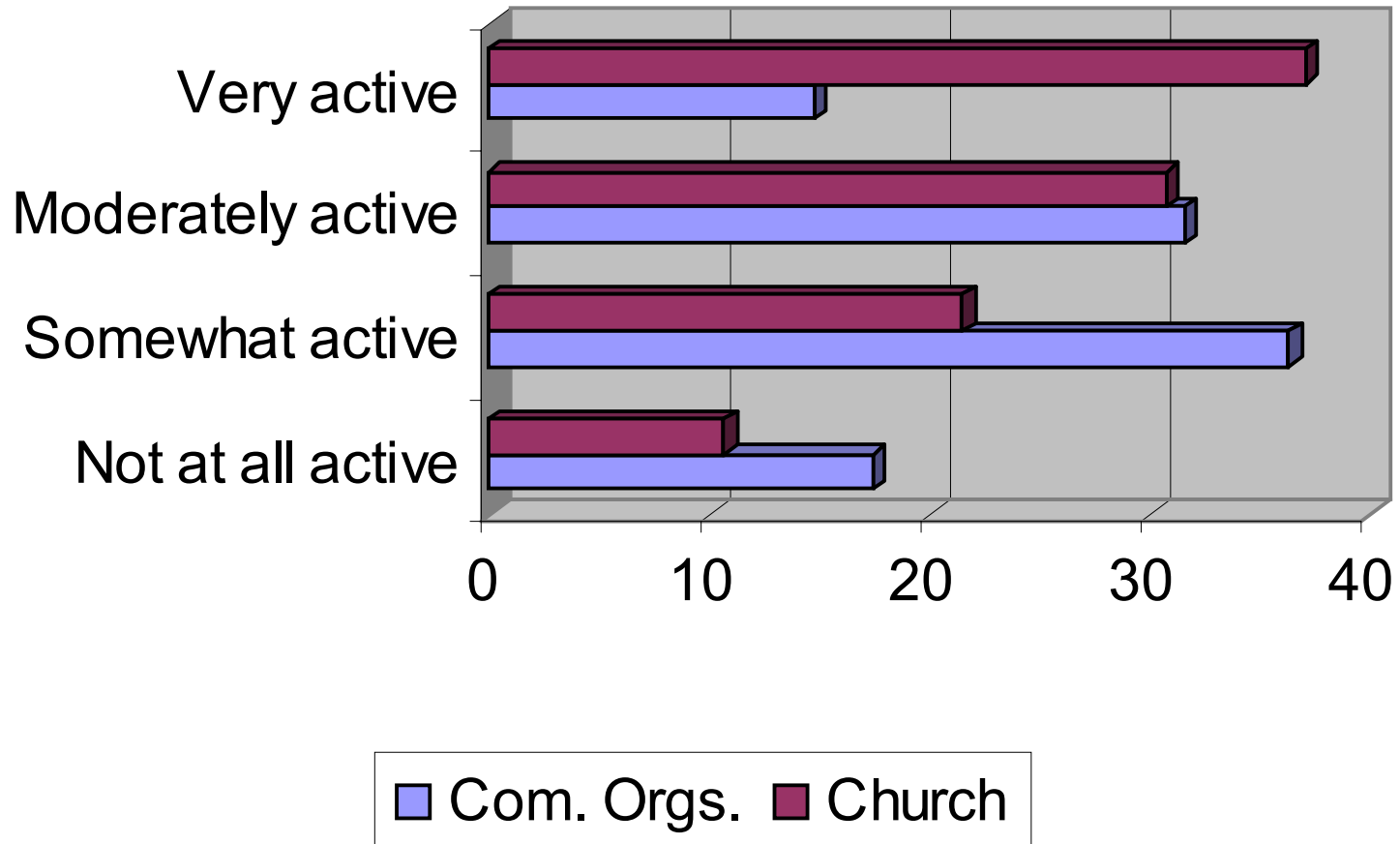


Figure 8a: Adjustments

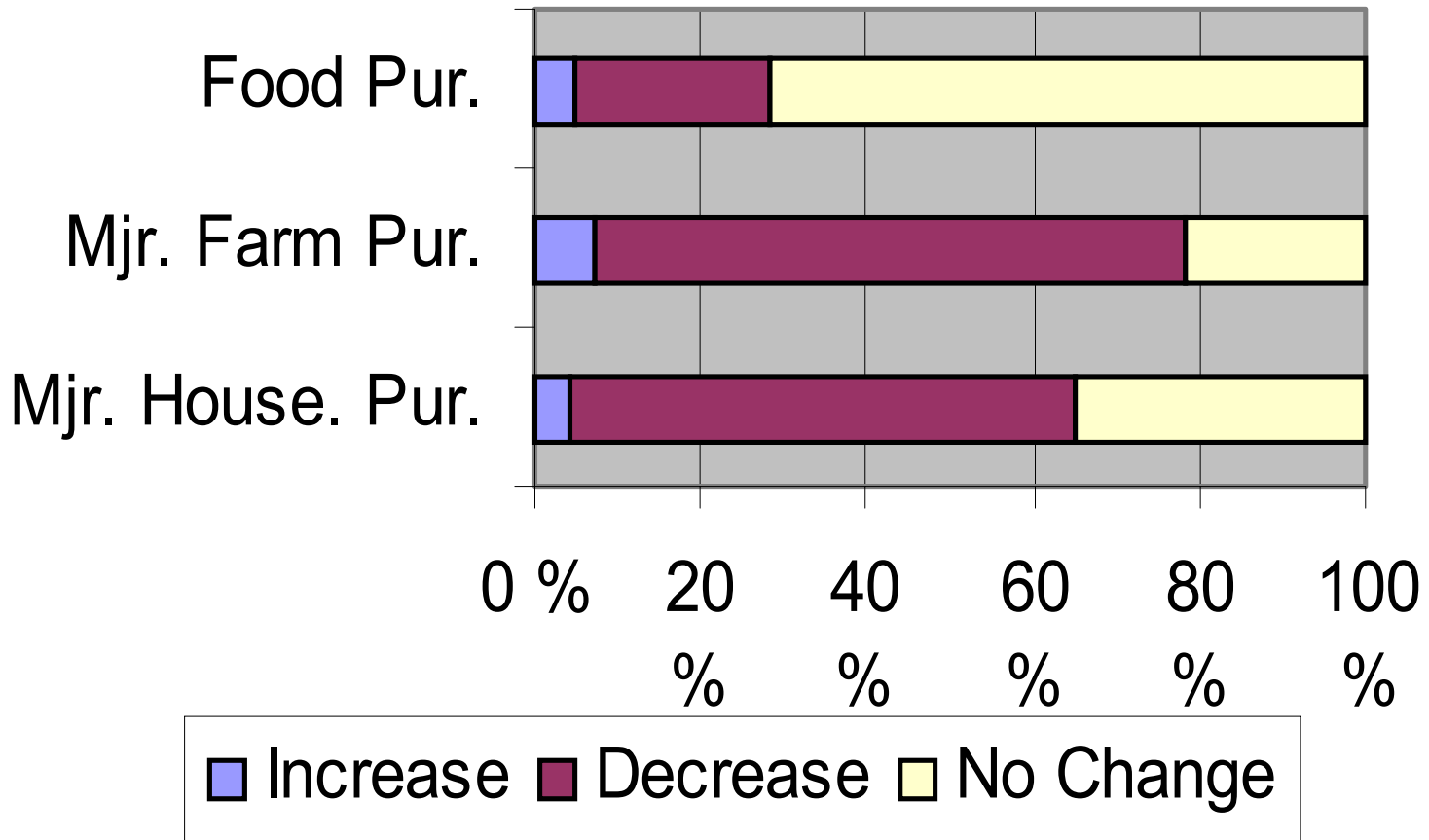


Figure 8b: Adjustments

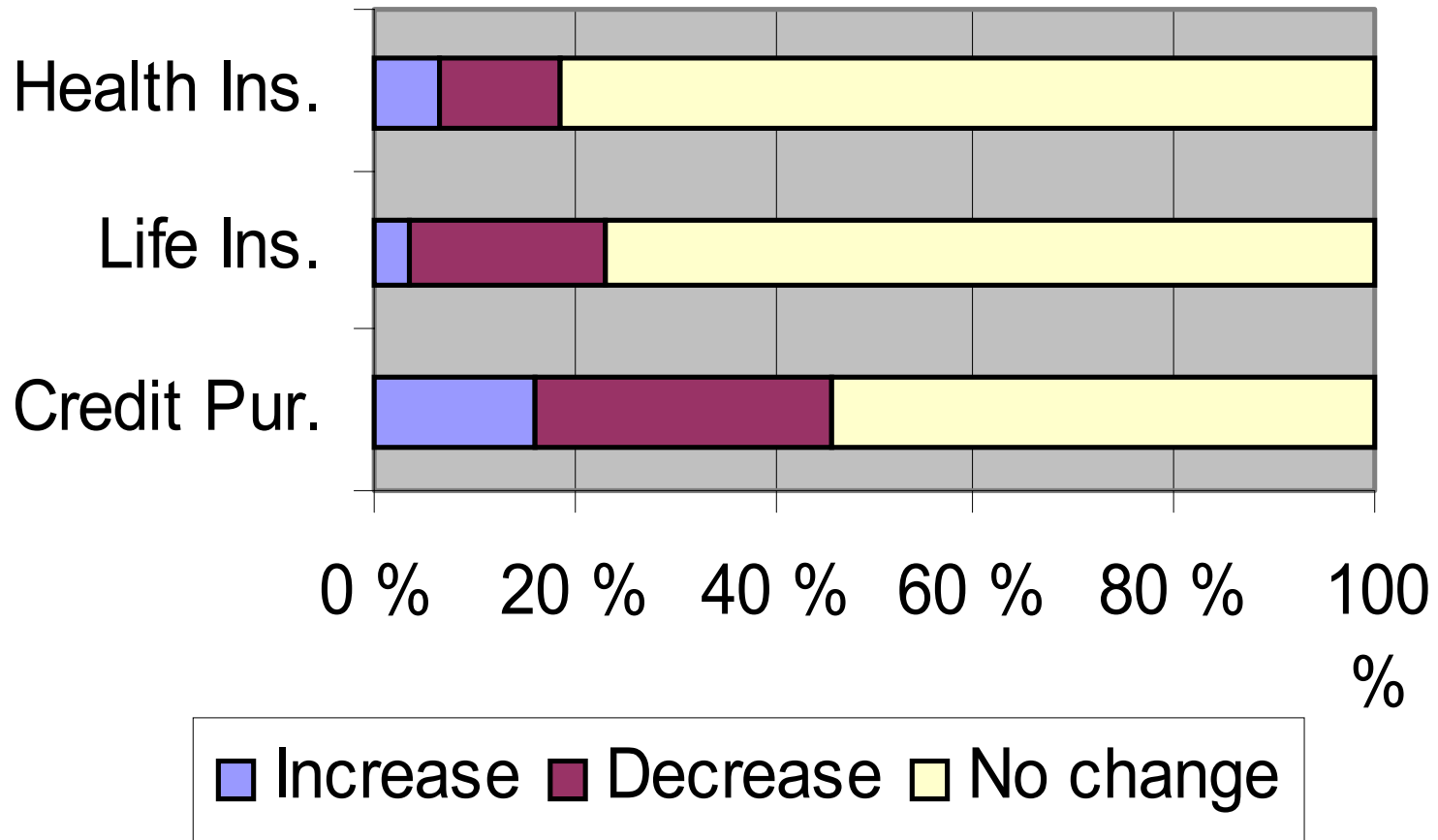


Figure 8c: Adjustments

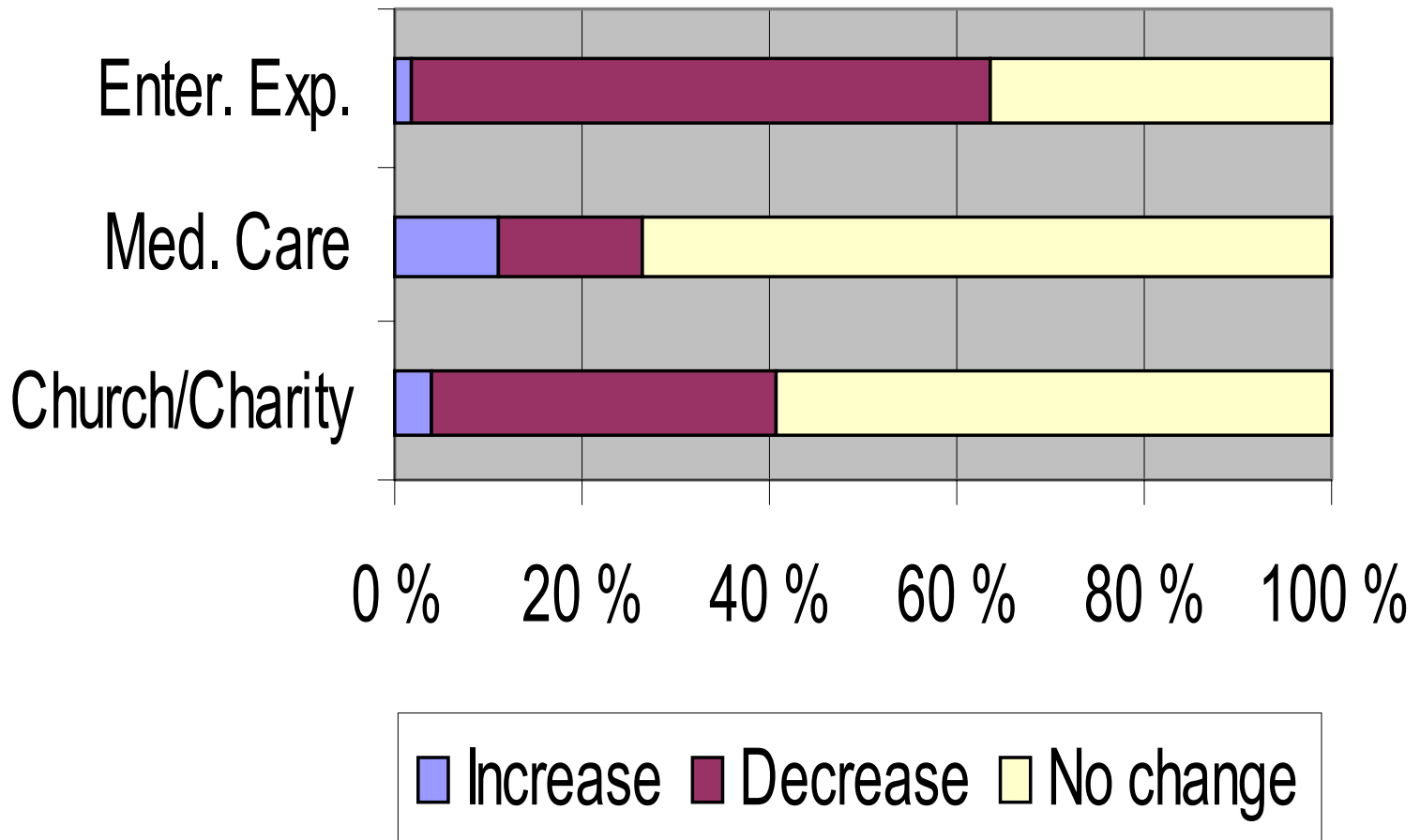
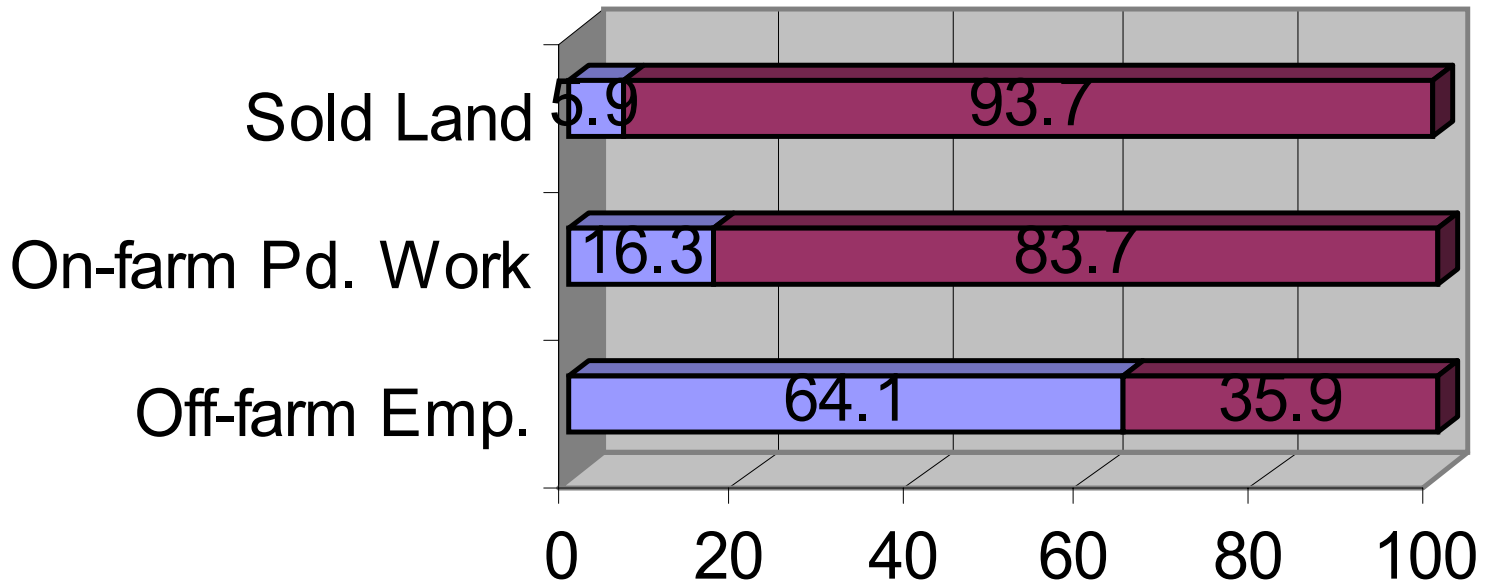
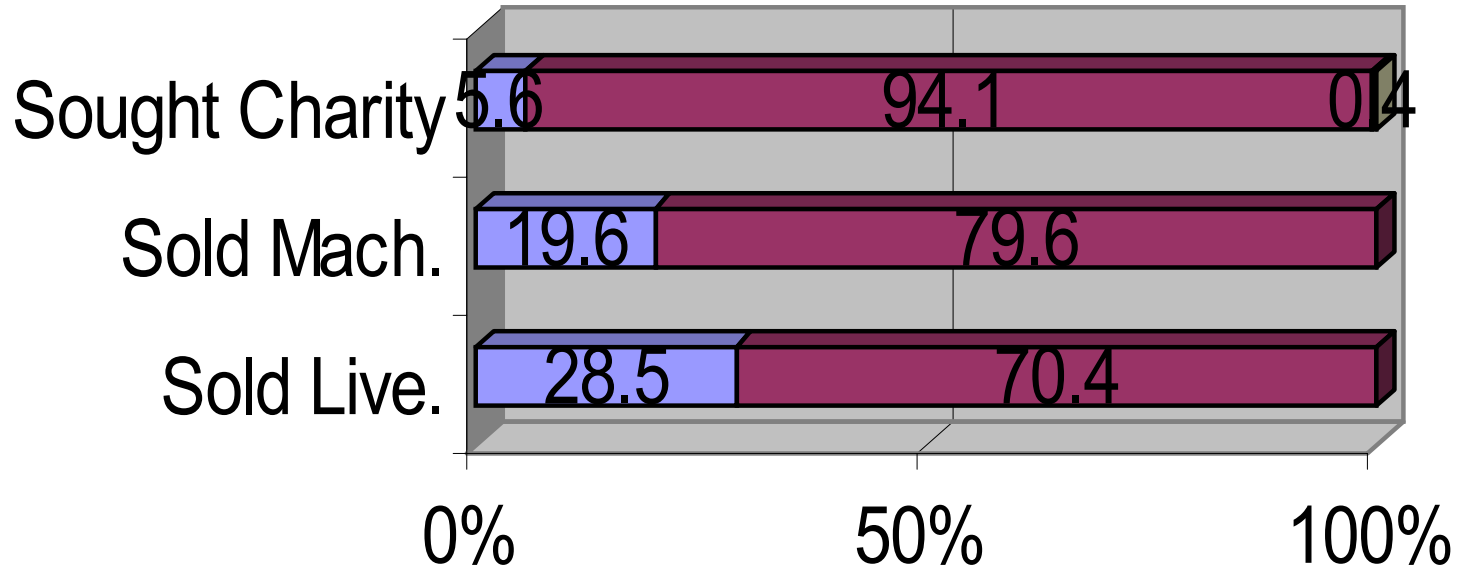


Figure 9a. Other adjustments



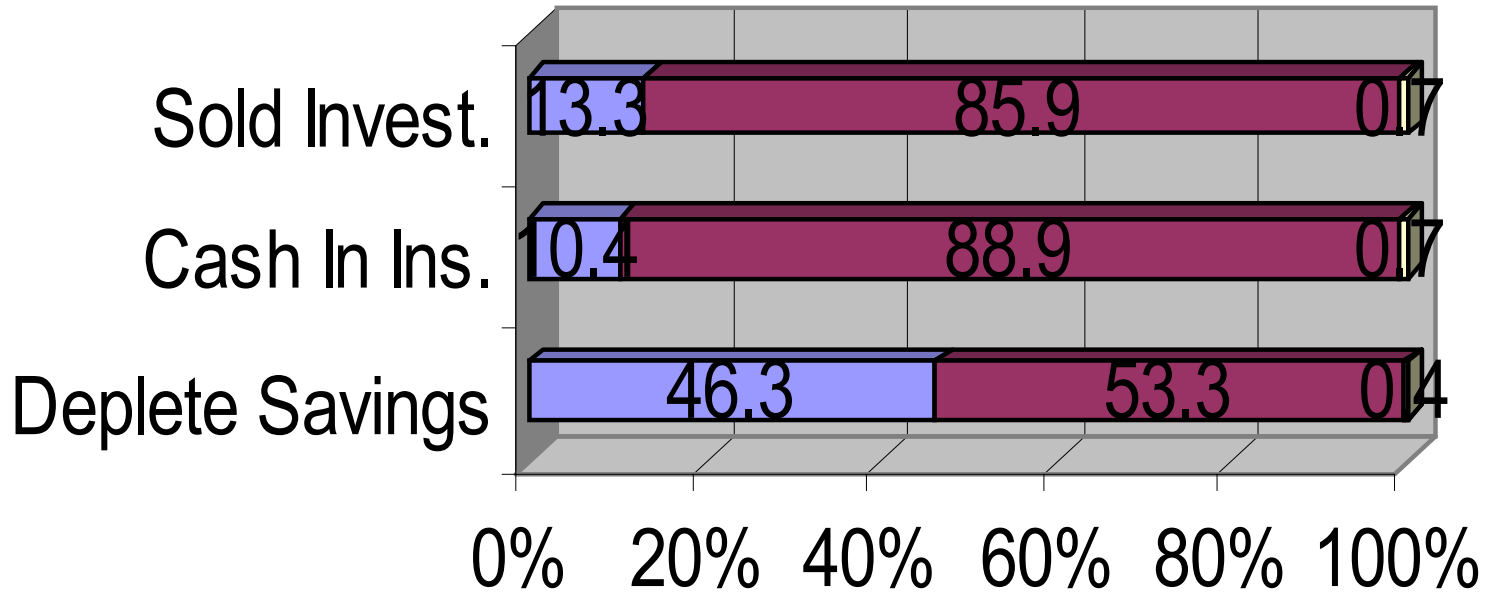
■ Yes ■ No Change

Figure 9b. Other adjustments



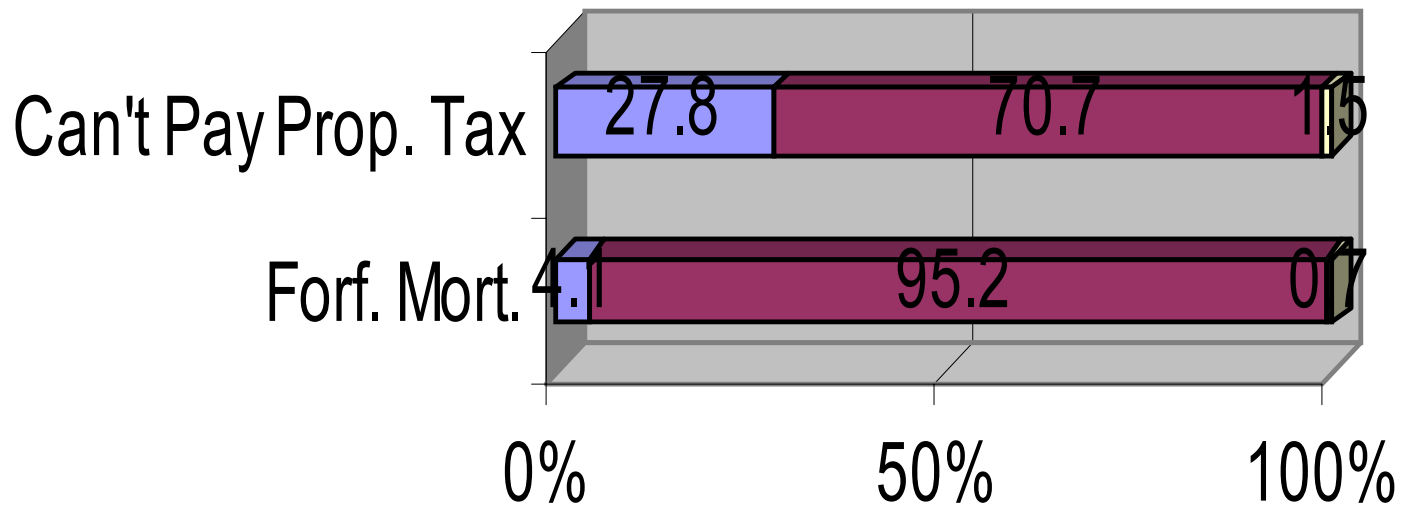
■ Yes ■ No Change ■ Don't Know

Figure 9c. Other adjustments



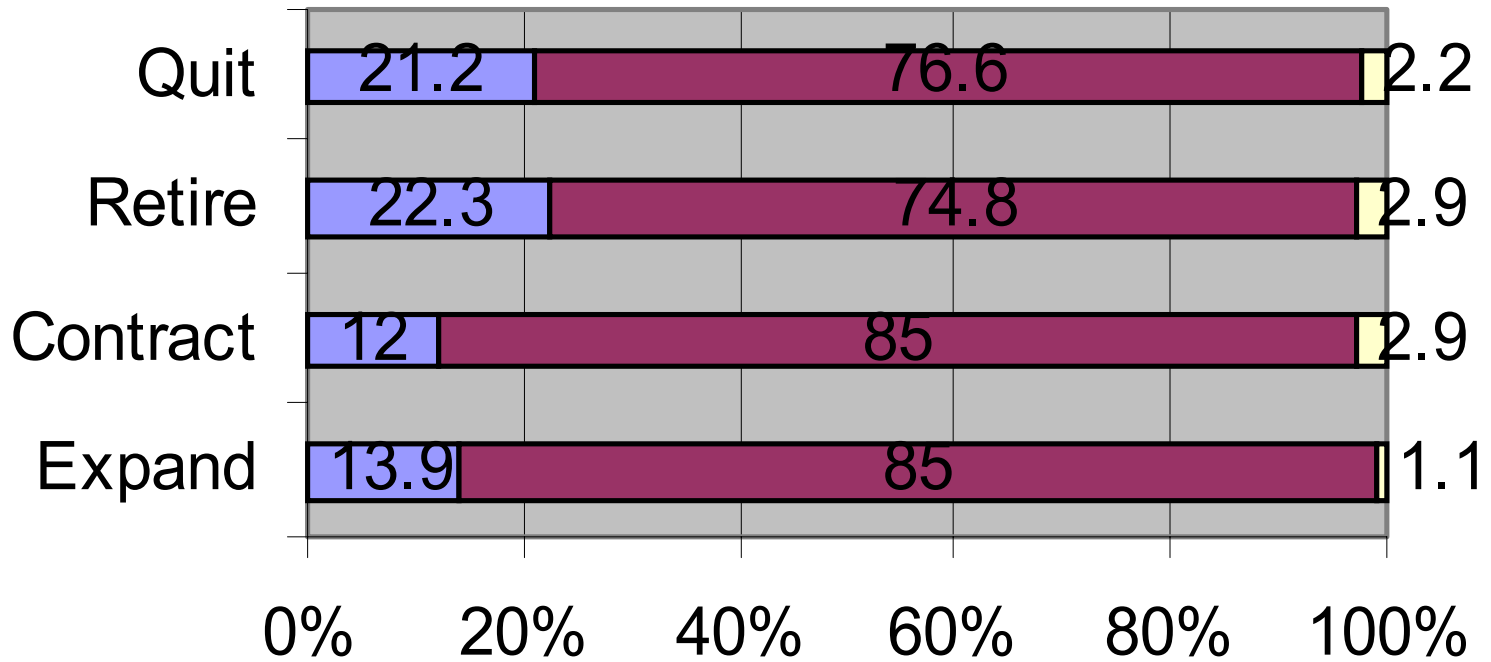
■ Yes ■ No Change ■ Don't Know

Figure 9d. Other adjustments



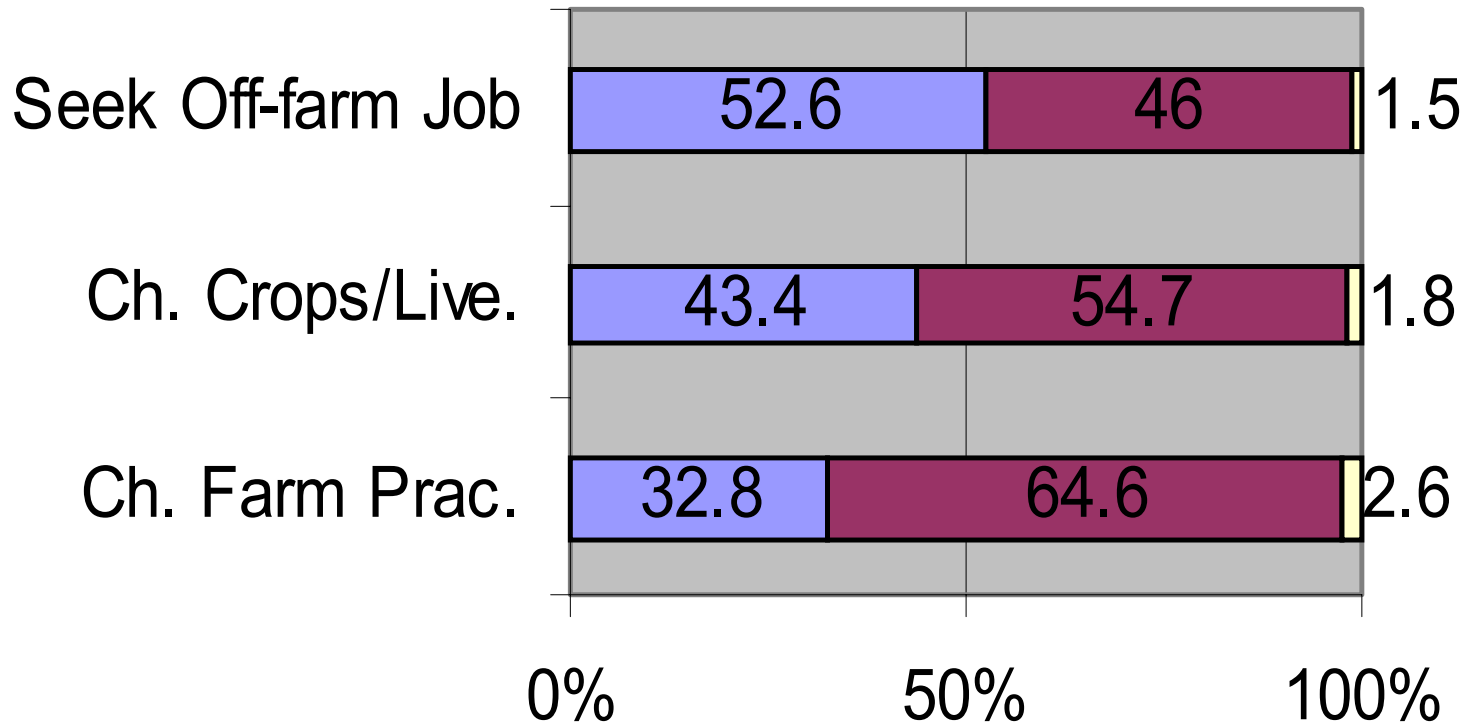
■ Yes ■ No Change ■ Don't Know

Figure 10a: Future plans



■ Yes ■ No ■ Don't know

Figure 10b. Other adjustments



■ Yes ■ No ■ Don't know

Figure 11a: Ag. Policy Changes

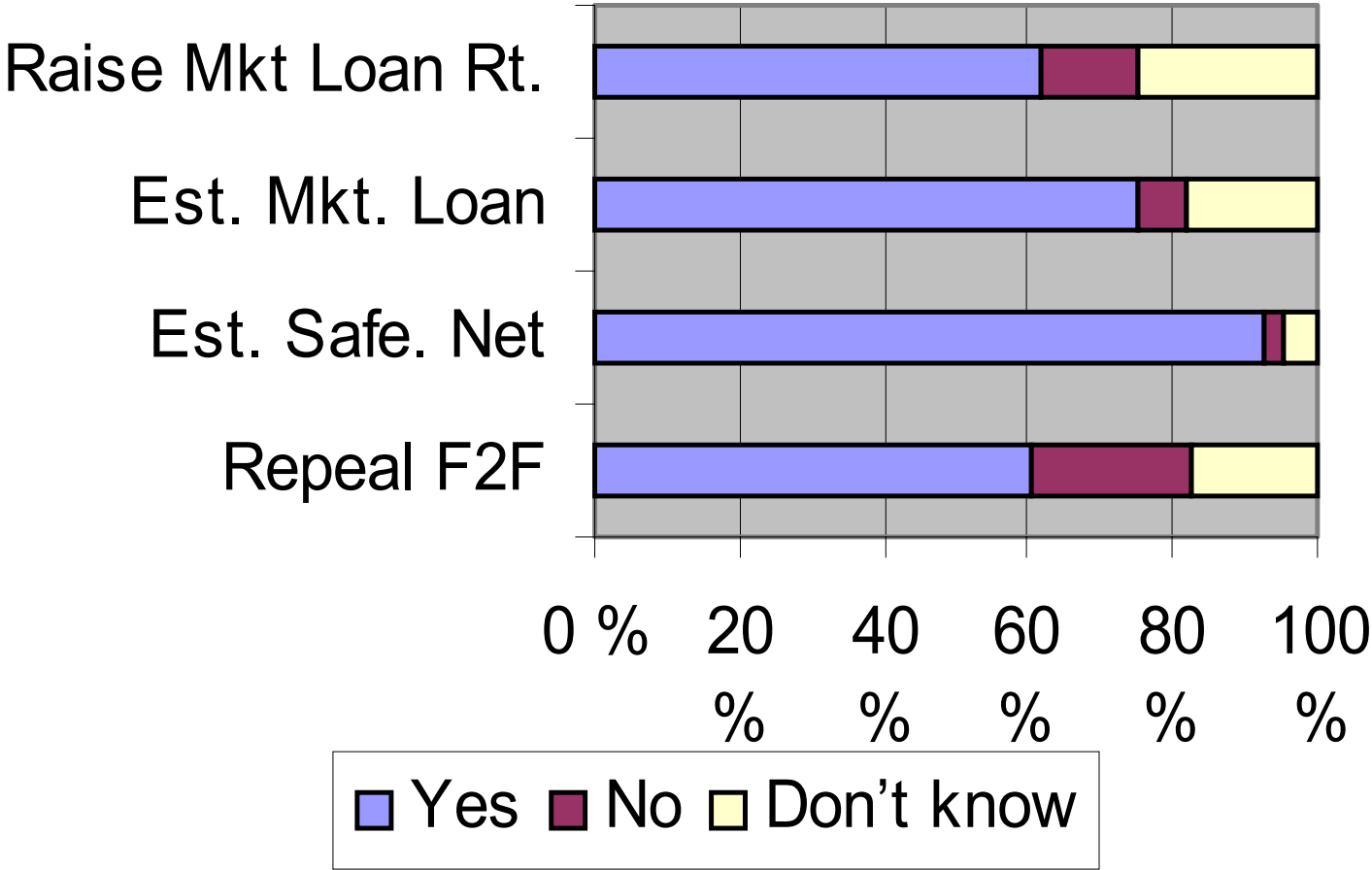


Figure 11b. Crop Ins. Changes

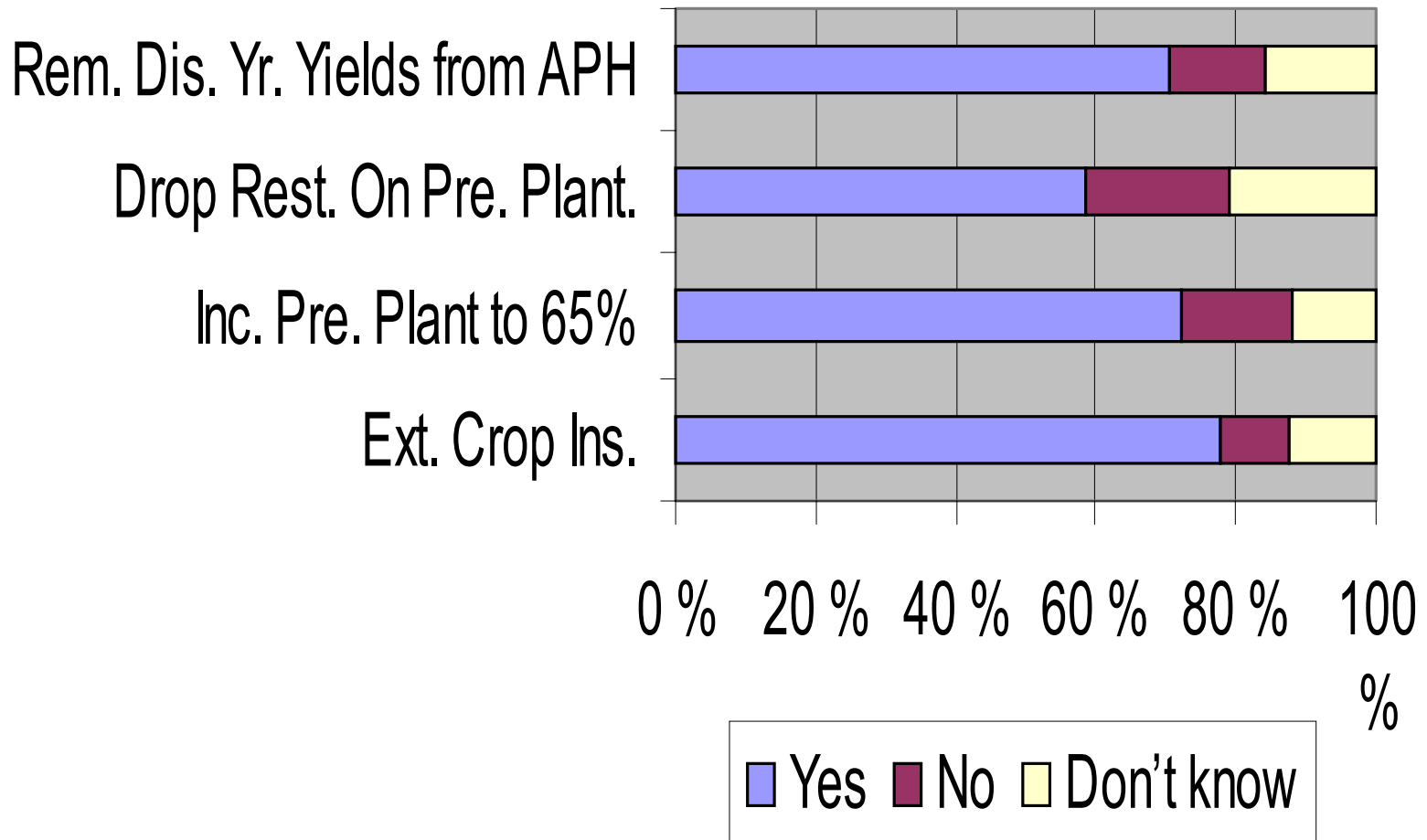


Figure 11c. State ag. policy changes

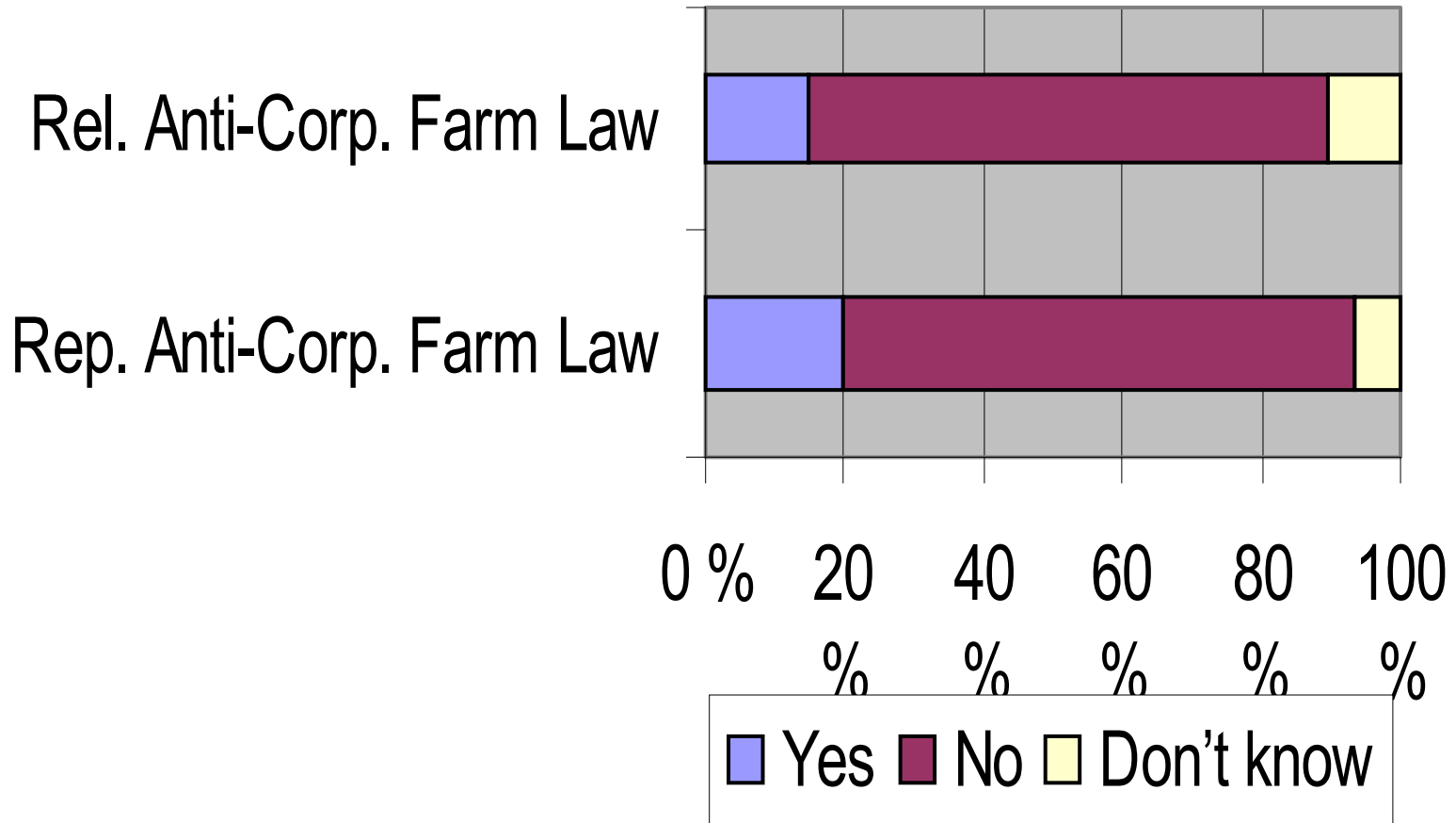


Figure 11d. State ag. policy changes

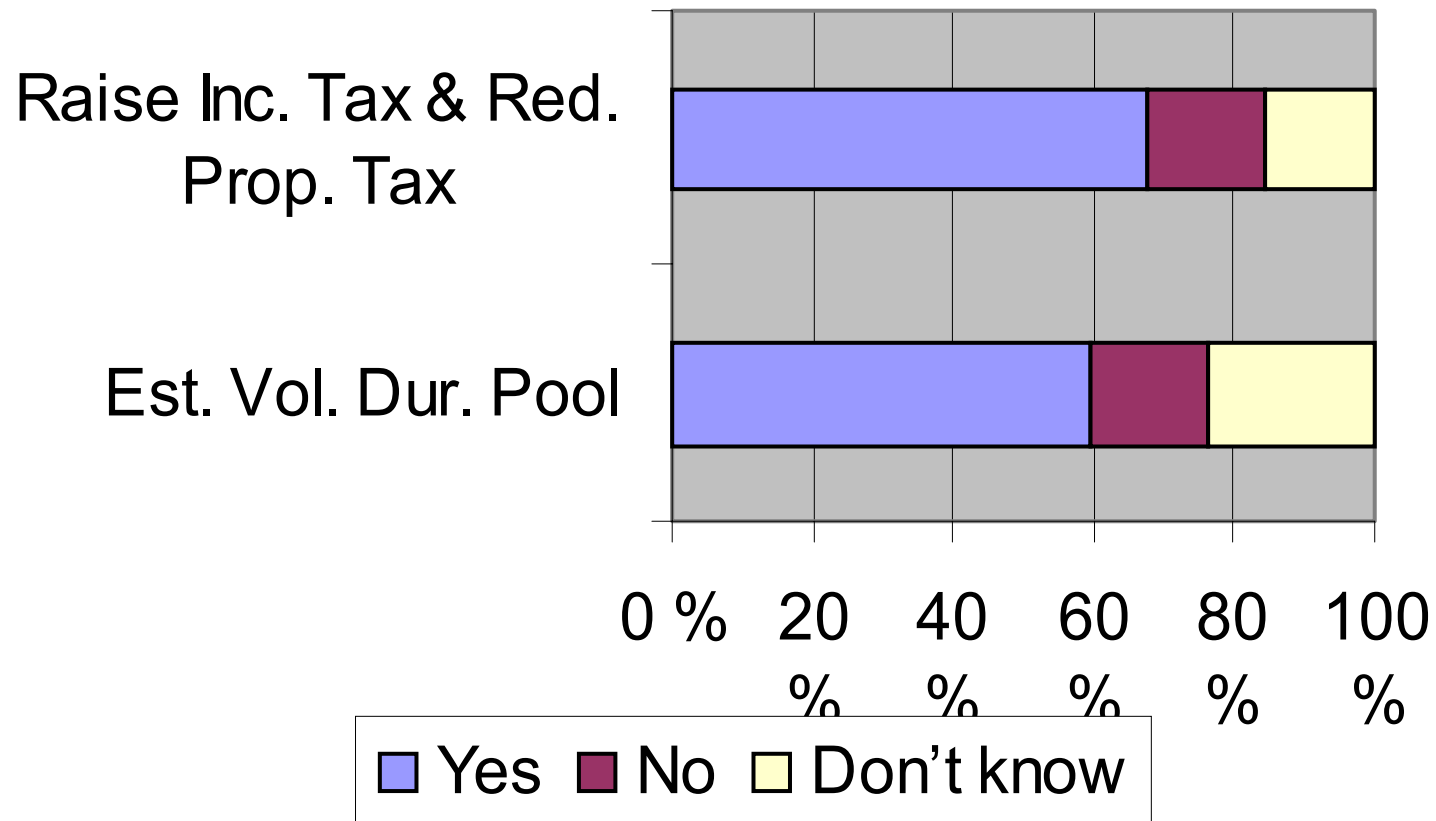


Figure 12a. Gross Farm Sales

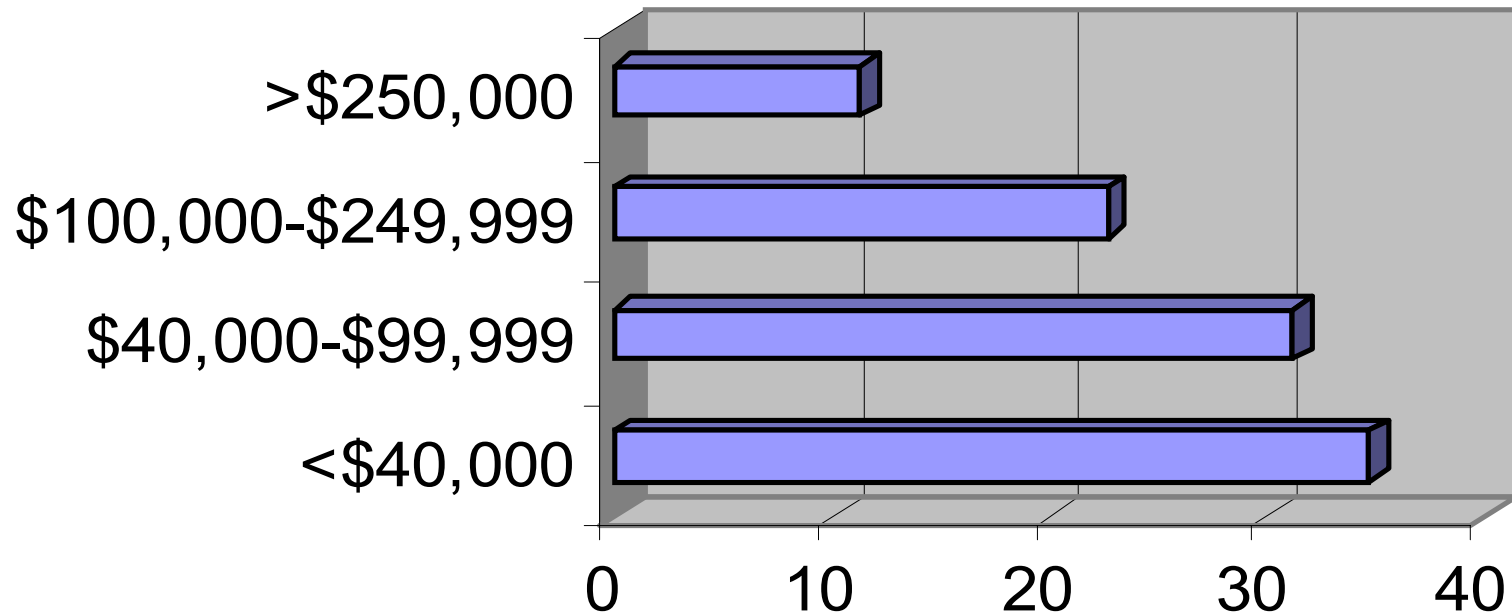


Figure 12b. Net Farm Income

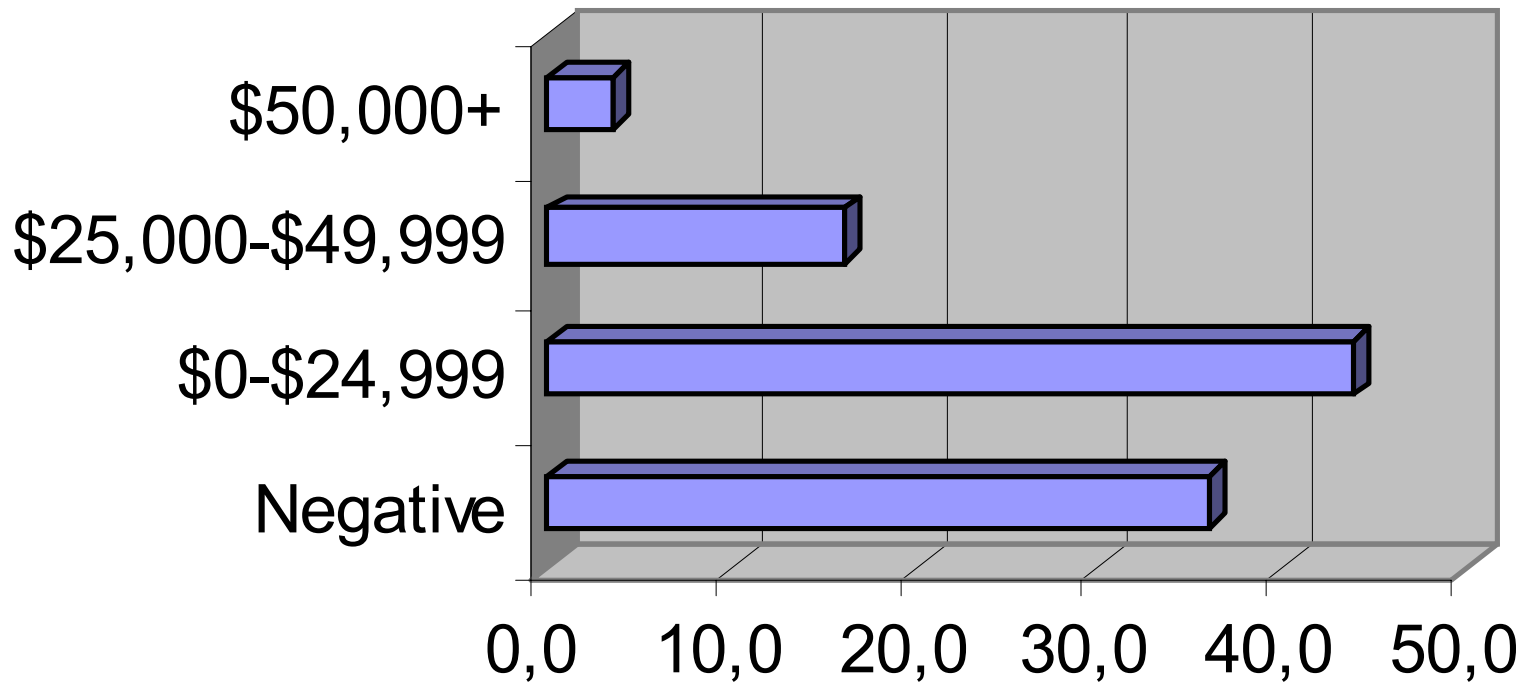


Figure 12c. Acres farmed

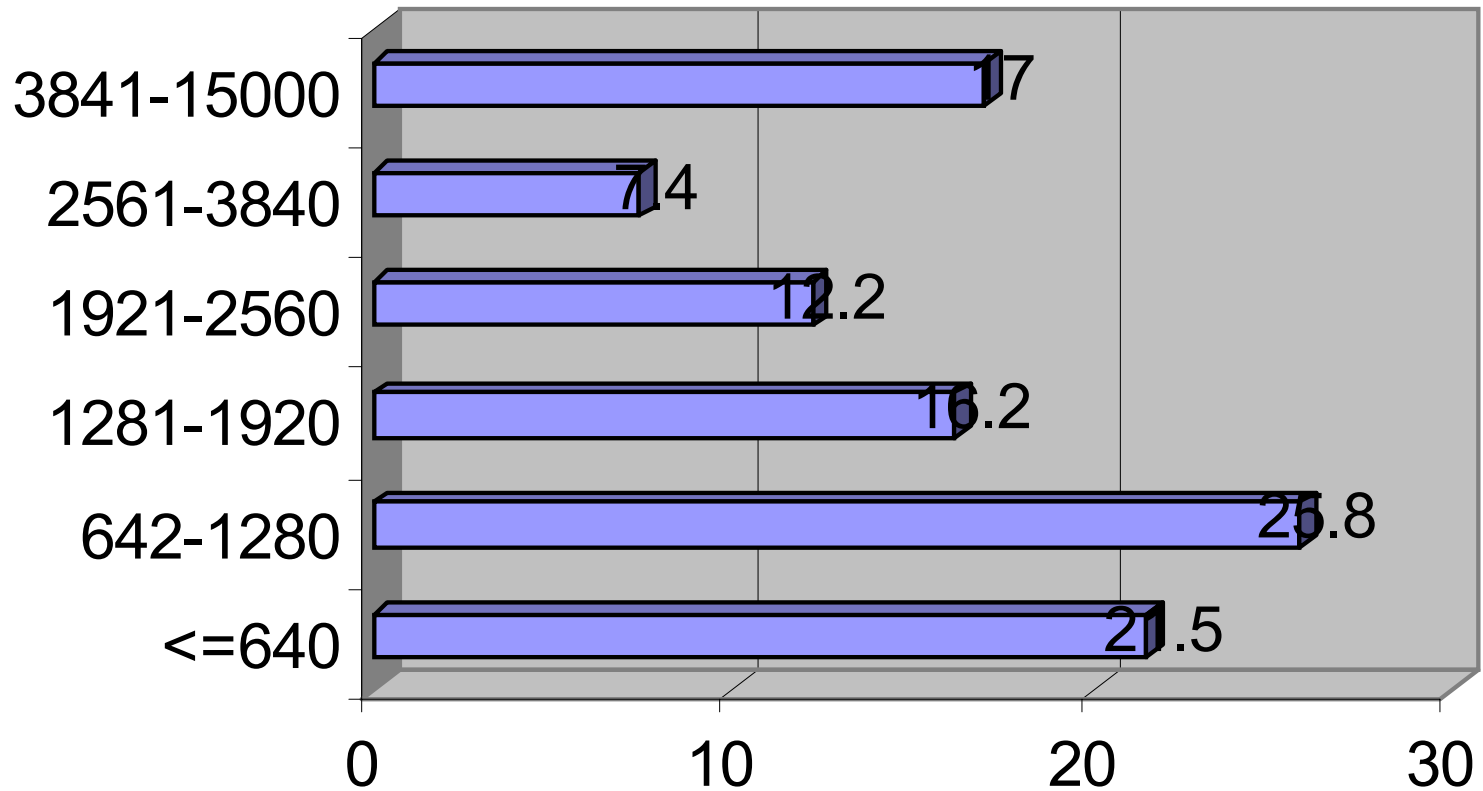


Figure 12d. Debt to Asset Ratio

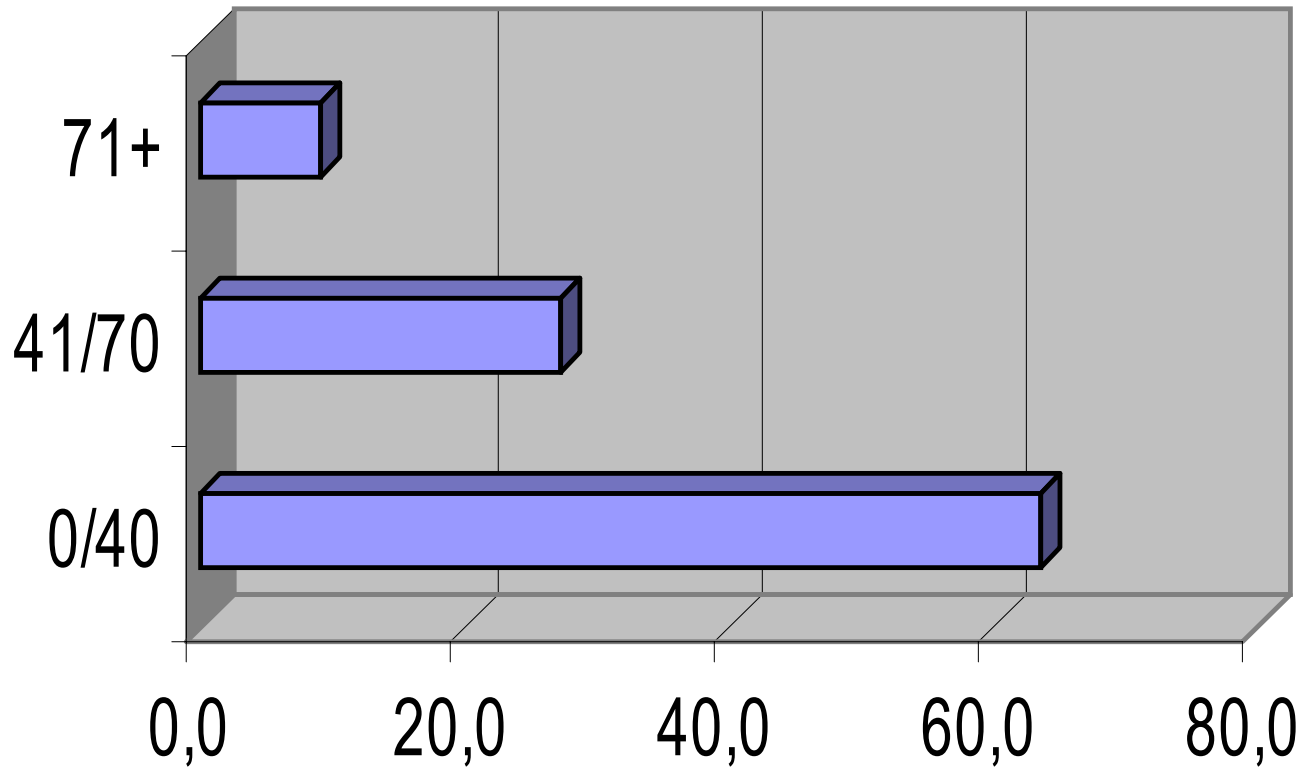
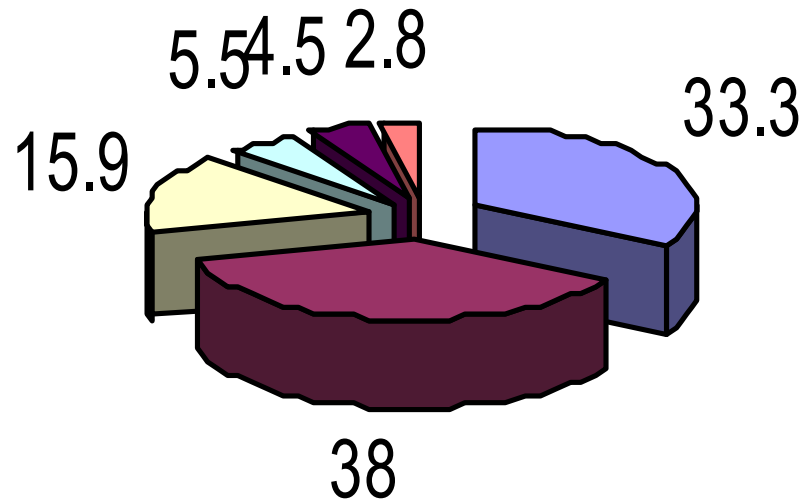


Figure 12e. Percent of acres not planted



1-20%.

21-40%

41-60%

61-99%

100%

not applicable

Figure 12f. Difficulty in securing operating loan?

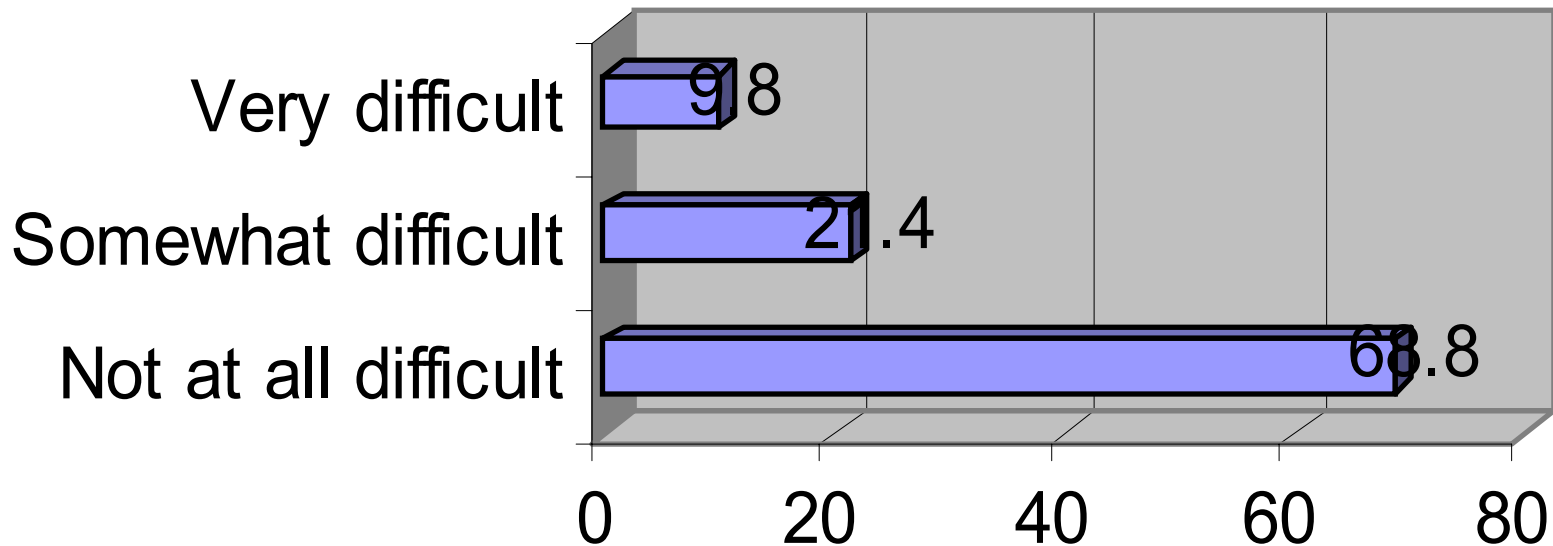


Figure 12g. Age

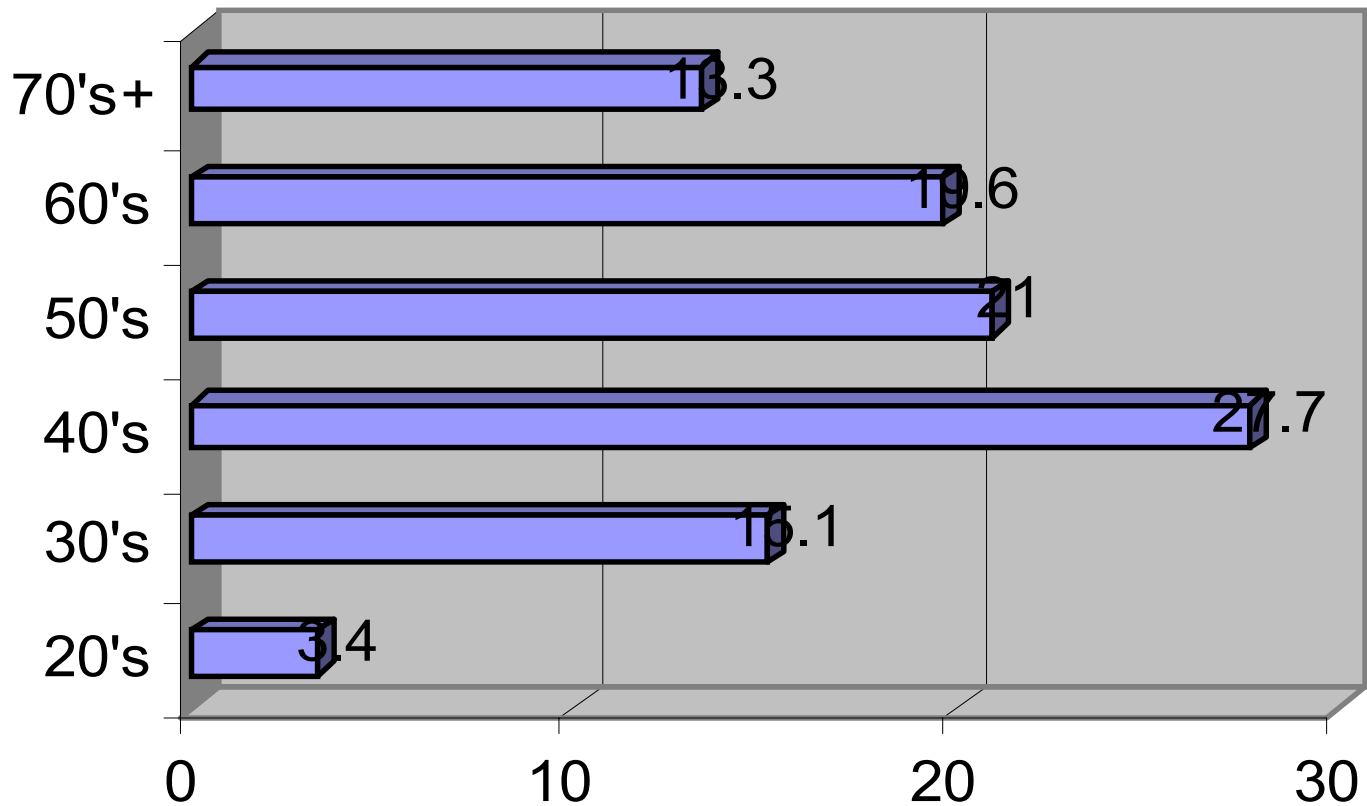
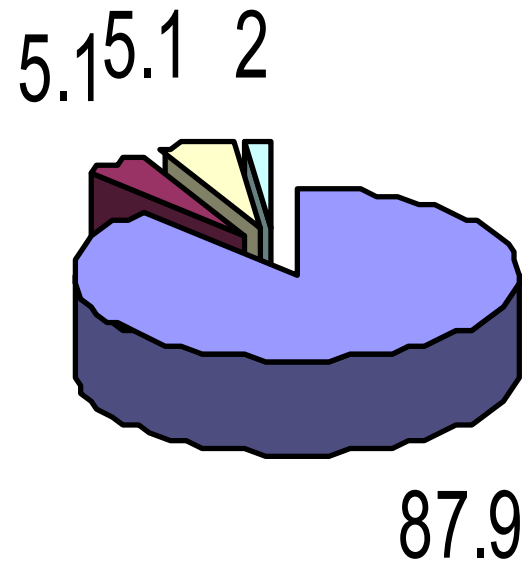


Figure 12h. Marital status



■ Married ■ Single ■ Widowed ■ Divorced

Table 12i. Education

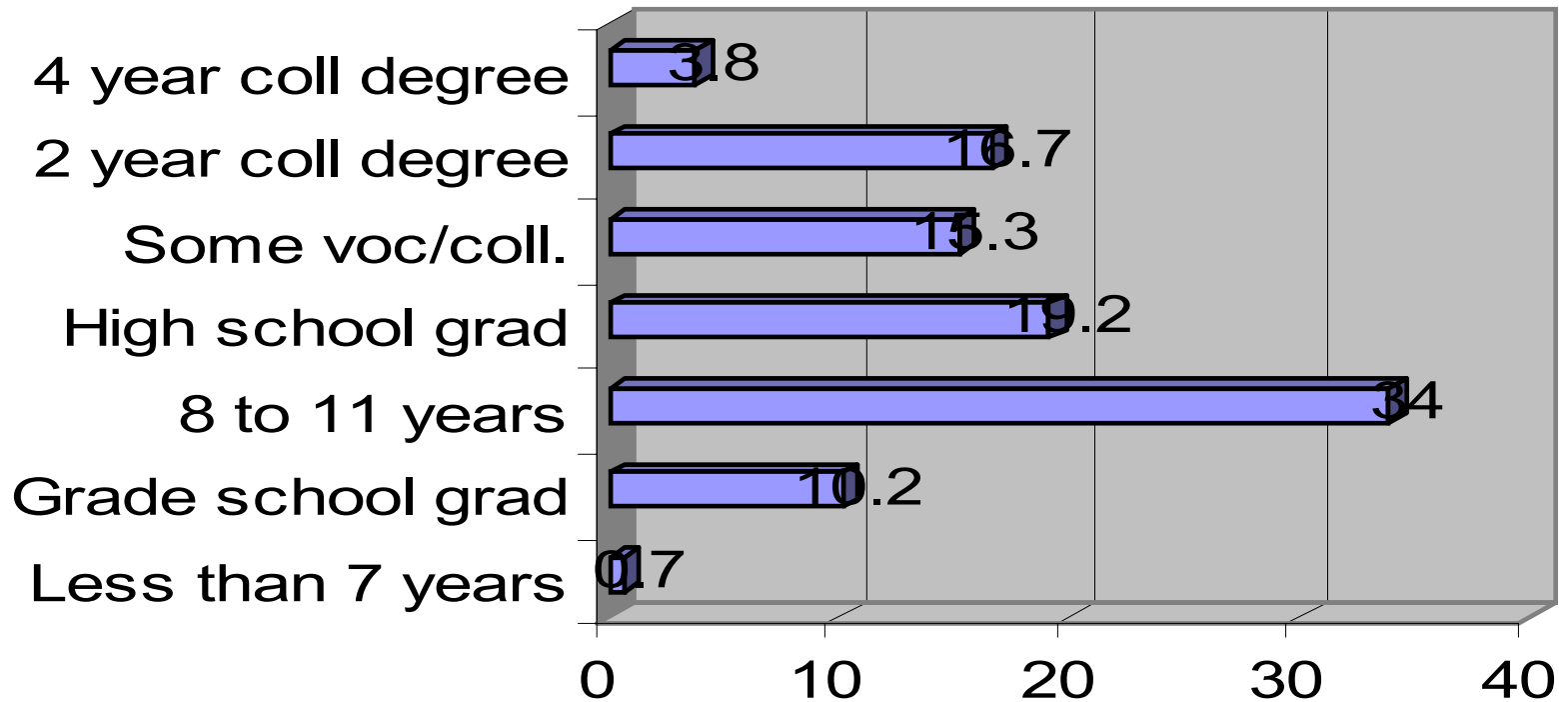
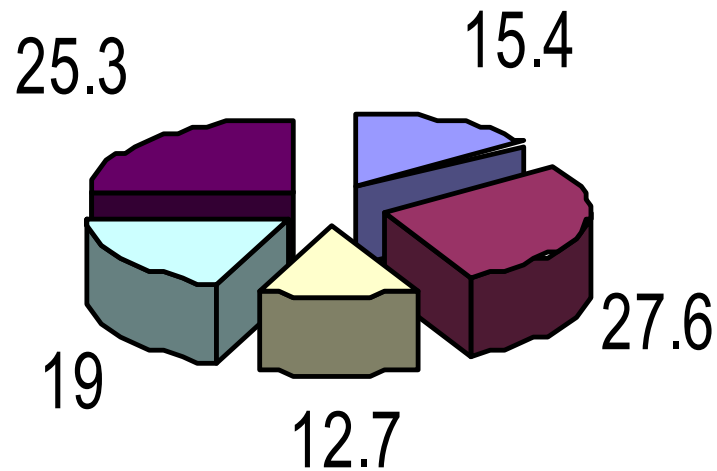


Figure 12j. Region



Northwest Northcent. Red River
West River Southcent.

Comparison of Data

Category	ND Farm Bus. Mgmt.	ND Rur. Life Poll
Net Farm Income		
Negative	26	36
\$0-\$24,999	30	44
\$25,000--\$49,999	20	16
\$50,000	24	4
Debt to Asset Ratio		
0--40%	24	64
40--70%	42	27
>70%	34	9
Age		
<34	19	8
34--44	42	24
45+	40	68

Comparison of Data

Category	ND Farm Bus. Mgmt.	ND Rur. Life Poll
Net Farm Income		
Negative	26	36
\$0-\$24,999	30	44
\$25,000--\$49,999	20	16
\$50,000	24	4
Debt to Asset Ratio		
0--40%	24	64
40--70%	42	27
>70%	34	9
Age		
<34	19	8
34--44	42	24
45+	40	68